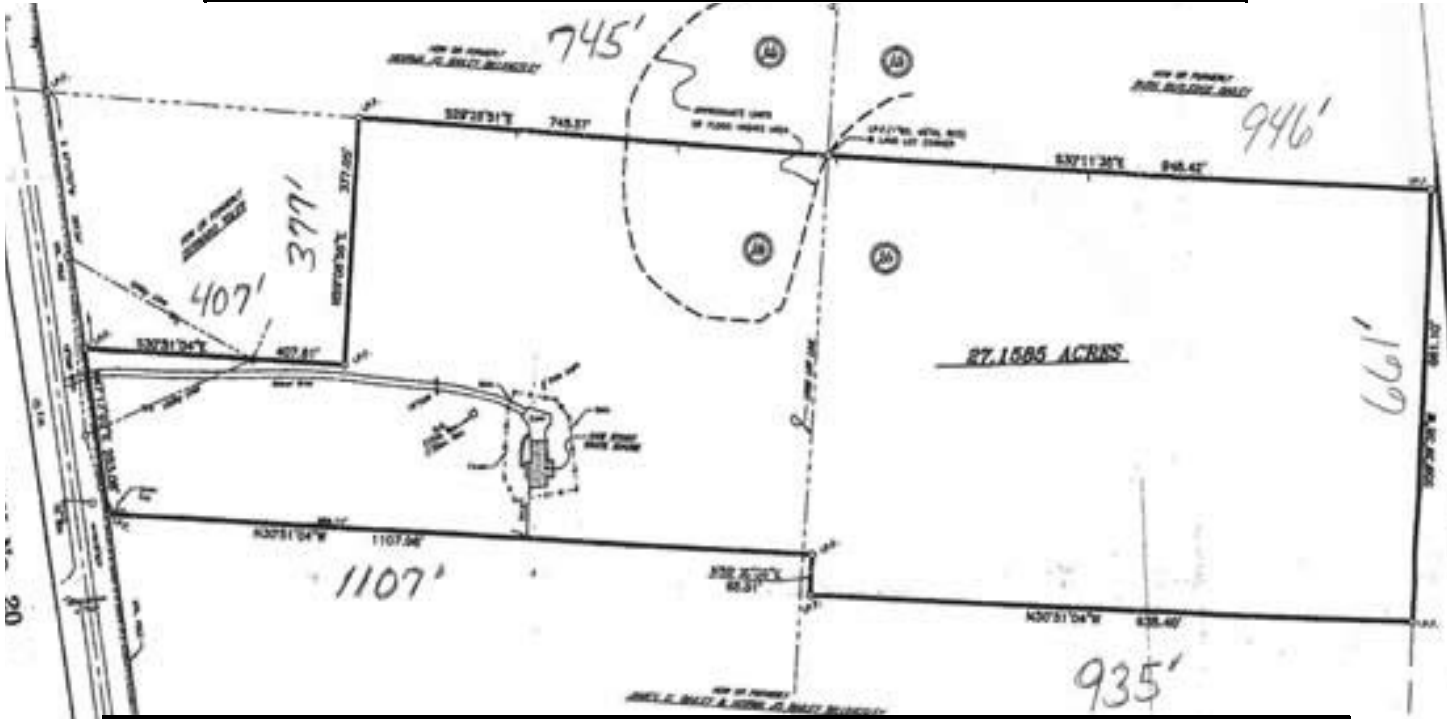


A U C T I O N

Tuesday, September 12th, 4 PM On Site...Rain or Shine

CARAVAN AUCTION | 7 COMMERCIAL PROPERTIES

6050 Georgia Hwy. 20-Loganville, Georgia 30052



**AUCTION #103 | 27 +/- Acre Development Tract
See Reversed Side For More Auctions!**

TERMS AND CONDITIONS

A 10% Buyer's Premium will be added to the high bid to arrive at the final contract price for the property.

10% down the day of the auction as earnest money and the balance of the contract price shall due on or before 30 days from the date of the auction.

Property is being sold "As Is, Where Is" and with all faults, without any warranty express or implied by the Seller and the Auctioneer.

Brokers Protected...Please Call for more detailed broker participation requirements.

For More Detailed Information & PIP (Property Information Package)...Please Call or Visit Our Website

404.303.1232 x 30



interstateauction.com

METRO ATLANTA AUCTIONS

7 COMMERCIAL PROPERTIES

TUESDAY, SEPTEMBER 12 & WEDNESDAY, SEPTEMBER 13

#101 - Selling Onsite 9-12-2006 @ 10:00 AM

OFFICE CONDOMINIUM

580 West Crossville Road, Suites 103 & 104, Roswell

Description: Spacious and Private Professional Office Condo comprised of two suites selling as one unit - Units 103 & 104: Total 2,440⁺ sq. ft., All Brick Construction; High Quality Interior Finishes; Great location just 3.8 miles west of GA 400. Special Showings: Tuesdays, Aug. 29 & Sept. 5; 2 to 4 PM.



#102 - Selling Onsite 9-12-2006 @ 1:00 PM

30,056⁺ SF LOT ZONED O&I

Holcomb Bridge Road, east of US 141 & Peachtree Industrial Blvd, Peachtree Corners, Norcross

Minimum Bid \$199,000

- Ideal Office Location
- Easy Access to I-285
- Zoned O&I
- All Utilities



#103 - Selling Onsite 9-12-2006 @ 4:00 PM

27⁺ ACRE DEVELOPMENT TRACT

6050 Georgia Hwy 20, Loganville

Description: This 27.1585⁺ Acre Tract has Commercial Potential.

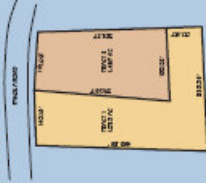


#201 - Selling Onsite 9-13-2006 @ 10:00 AM

3.432⁺ ACRE COMMERCIAL LAND

2551 and 2552 Panola Road, Atlanta

Description: Zoned C-1, Commercial, with a total acreage of 3.4⁺ Acres, this tract is being offered divided into two tracts: Tract 1: 1.935⁺ Acres Tract 2: 1.497⁺ Acres



#203 - Selling Onsite 9-13-2006 @ 4:00 PM

0.68⁺ ACRE RETAIL OUT-PARCEL

Godby Road, College Park

Description: Zoned C-2, this 0.68⁺ Acre Retail High Exposure Out Parcel is ideally situated behind the McDonalds on Old National Highway with frontage and access on Godby Road, only 1/4 mile from I-85 & I-285. All utilities onsite.



#204 - Selling Onsite 9-13-2006 @ 4:00 PM

3.14⁺ ACRE CORNER RETAIL OUT-PARCEL

Corner of Godby Road and Godby Place, College Park

Description: Zoned C-2, this 3.14⁺ acre retail out-parcel is conveniently located at the corner of Godby Road and Godby Place.



#202 - Selling Onsite 9-13-2006 @ 1:00 PM

55.8⁺ ACRE CORNER COMMERCIAL LAND

NE Corner of Hwy 85 North & Corinth Road, Fayetteville

Description: This 55.8⁺ Acre Tract, zoned OH-Highway Commercial, has 3,155⁺ Feet of Triple Road Frontage: Hwy 85, Corinth Road & Carter Road. Ideal site for mixed use development.



ACCELERATED MARKETING DIVISION
INTERSTATE AUCTION CO. INC.

www.interstateauction.com

404-303-1232 (ext 30)