

METRO ATLANTA AUCTIONS

7 COMMERCIAL PROPERTIES

TUESDAY, SEPTEMBER 12 & WEDNESDAY, SEPTEMBER 13

#101 - Selling Onsite 9-12-2006 @ 10:00 AM

OFFICE CONDOMINIUM

580 West Crossville Road, Suites 103 & 104, Roswell

Description: Spacious and Private Professional Office Condo comprised of two suites selling as one unit - Units 103 & 104: Total 2,440[±] sq. ft.; All Brick Construction; High Quality Interior Finishes; Great location just 3.8 miles west of GA 400. **Special Showings:** Tuesdays, Aug. 29 & Sept. 5; 2 to 4 PM.



#102 - Selling Onsite 9-12-2006 @ 1:00 PM

30,056[±] SF LOT ZONED O&I

Holcomb Bridge Road, east of US 141 & Peachtree Industrial Blvd, Peachtree Corners, Norcross
Minimum Bid \$199,000

- Ideal Office Location
- Easy Access to I-285
- Zoned O&I
- All Utilities

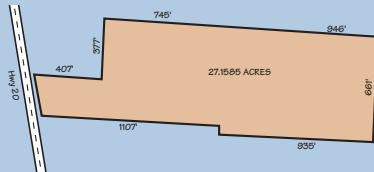


#103 - Selling Onsite 9-12-2006 @ 4:00 PM

27[±] ACRE DEVELOPMENT TRACT

6050 Georgia Hwy 20, Loganville

Description: This 27.1585[±] Acre Tract has Commercial Potential.

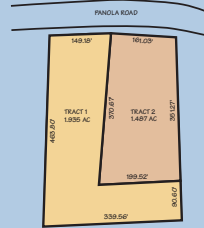


#201 - Selling Onsite 9-13-2006 @ 10:00 AM

3.432[±] ACRE COMMERCIAL LAND

2551 and 2552 Panola Road, Atlanta

Description: Zoned C-1, Commercial, with a total acreage of 3.4[±] Acres, this tract is being offered divided into two tracts: Tract 1: 1.935[±] Acres
Tract 2: 1.497[±] Acres



WWW.INTERSTATEAUCTION.COM

404-303-1232

#202 - Selling Onsite 9-13-2006 @ 1:00 PM

55.8[±] ACRE CORNER COMMERCIAL LAND

NE Corner of Hwy 85 North & Corinth Road, Fayetteville

Description: This 55.8[±] Acre Tract, zoned CH-Highway Commercial, has 3,155[±] Feet of Triple Road Frontage: Hwy 85, Corinth Road & Carter Road. Ideal site for mixed use development.

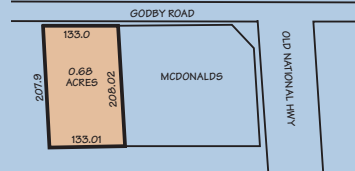


#203 - Selling Onsite 9-13-2006 @ 4:00 PM

0.68[±] ACRE RETAIL OUT-PARCEL

Godby Road, College Park

Description: Zoned C-2, this 0.68[±] Acre Retail High Exposure Out Parcel is ideally situated behind the McDonalds on Old National Highway with frontage and access on Godby Road, only 1/4 mile from I-85 & I-285. All utilities onsite.



#204 - Selling Onsite 9-13-2006 @ 4:00 PM

3.14[±] ACRE CORNER RETAIL OUT-PARCEL

Corner of Godby Road and Godby Place, College Park

Description: Zoned C-2, this 3.14[±] acre retail out-parcel is conveniently located at the corner of Godby Road and Godby Place.



Sperry Van Ness
ACCELERATED MARKETING DIVISION
INTERSTATE AUCTION CO. INC.

www.interstateauction.com
404-303-1232 (ext 30)

1100 Johnson Ferry Road NE • Suite 588
Atlanta, GA 30342

GAL#1966; John L. Johnson, Auctioneer

www.interstateauction.com
404-303-1232, ext.30

METRO ATLANTA AUCTIONS

7 COMMERCIAL PROPERTIES

TUESDAY, SEPTEMBER 12 & WEDNESDAY, SEPTEMBER 13

- **ATLANTA:** 3.4⁻ ACRE COMMERCIAL LAND
- **COLLEGE PARK:** 0.68⁻ ACRE RETAIL OUT-PARCEL
- **COLLEGE PARK:** 3.14⁻ ACRE CORNER RETAIL OUT-PARCEL
- **FAYETTEVILLE:** 55.8⁻ ACRE CORNER COMMERCIAL LAND
- **LOGANVILLE:** 27⁻ ACRE DEVELOPMENT TRACT
- **NORCROSS:** 0.68⁻ ACRE OFFICE SITE, ZONED O&I
- **ROSWELL:** OFFICE CONDOMINIUM



**Color Photos, Plats,
Detailed Property Information,
Terms and Conditions
Available On Our Website
www.interstateauction.com
404-303-1232 (ext 30)**