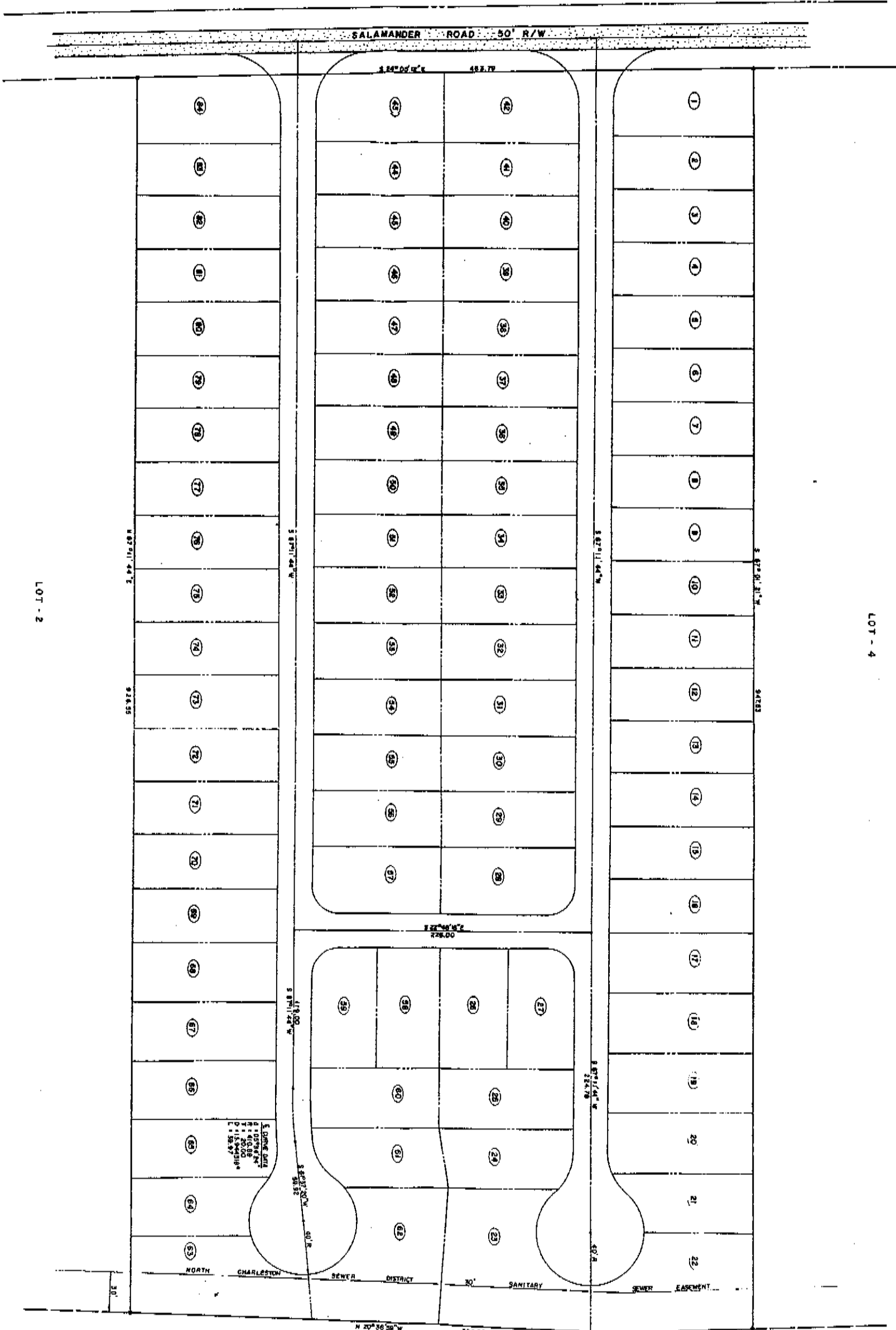


CURTIS W. LYBRAND, JR.
 CIVIL ENGINEER & LAND SURVEYOR
 60 HUNLEY STREET
 CHARLESTON, SOUTH CAROLINA - 29403
 (803) 577-4400



DEER HAVEN
 MOBILE HOME COMMUNITY
 LOCATED IN DEER PARK
 CITY OF NORTH CHARLESTON
 CHARLESTON COUNTY, SOUTH CAROLINA
 SCALE: 1" = 40'

SHEET NO. OF DWG. NO. 1-110

U. S. INTERSTATE NO. 26 R/W VARIES

