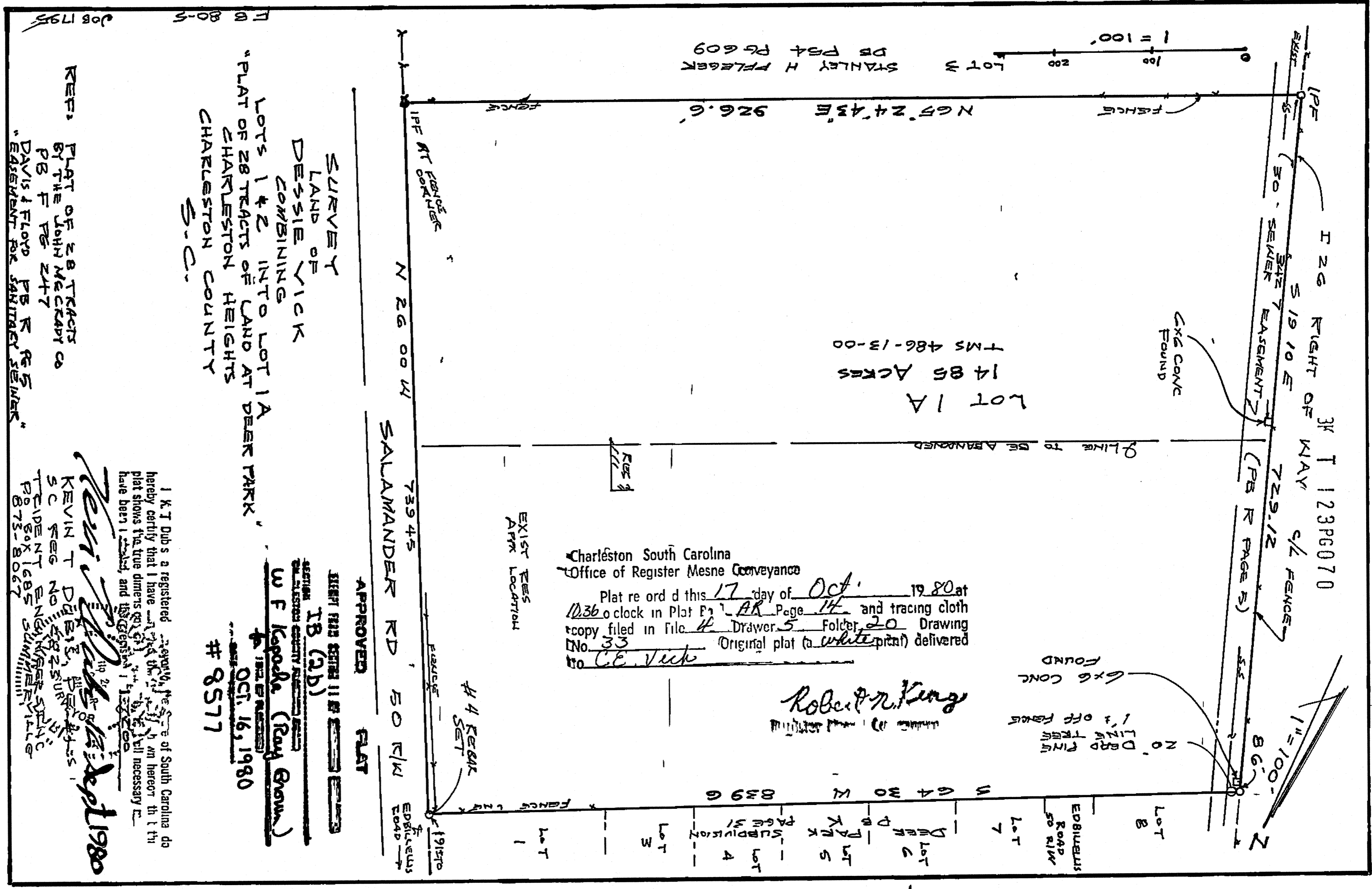


8979  
Salamander  
Rd



STANLEY H FLEGER  
DB PAT PG 609

LOT 1A  
14.85 ACRES  
TMS 486-13-00

Charleston South Carolina  
Office of Register Mesne Conveyance  
Plat recorded this 17 day of Oct, 1980 at  
10:36 o'clock in Plat P AR Page 14 and tracing cloth  
copy filed in File 4 Drawer 5 Folder 20 Drawing  
No 33 Original plat (a white print) delivered  
to CE Vick

*Robert King*  
REGISTER

SURVEY  
LAND OF  
DESSIE VICK  
COMBINING  
LOTS 1 & 2 INTO LOT 1A  
"PLAT OF 28 TRACTS OF LAND AT DEER PARK"  
CHARLESTON HEIGHTS  
CHARLESTON COUNTY  
S.C.

REF: PLAT OF 28 TRACTS  
BY THE JOHN MCKAY CO  
PB F PG 247  
"EASEMENT FOR SANITARY SEWER"  
DAVIS & FLOYD PB R PG 5

APPROVED PLAT  
DEPT FILE SERIAL 118  
SECTION 1B (2b)  
W F Kapala (Roy Brown)  
OCT. 16, 1980  
# 8577

I, K. T. Dub's a registered surveyor of South Carolina do hereby certify that I have read the plat and the tracing cloth plat shows the true dimensions and that the same have been located and the original plat is correct.

*Kevin T. Dub's*  
KEVIN T. DUB'S, REGISTERED SURVEYOR  
S.C. REG NO. 12822  
RESIDENT 1685 SUMMITTOWN VILLAGE  
P.O. BOX 1685  
873-8067

*Kevin T. Dub's*  
OCT 16 1980

