

LEGEND:

- EP - EDGE OF PAVEMENT
- TC - TOP OF CURB
- BC - BOTTOM OF CURB
- PP - POWER POLE
- UP - UTILITY POLE
- SSMH - SANITARY SEWER MANHOLE
- L/P - LIGHT POLE
- DWCB - DOUBLE WING CATCH BASIN
- SWCB - SINGLE WING CATCH BASIN
- JB - JUNCTION BOX
- FH - FIRE HYDRANT
- WV - WATER VALVE
- IPS - IRON PIN SET (#4 REBAR)
- IPF - IRON PIN FOUND
- OTP - OPEN TOP PIPE
- N/F - NOW OR FORMERLY
- LL - LAND LOT
- LLL - LAND LOT LINE
- CL - CENTERLINE
- BL - BUILDING LINE
- SSE - SANITARY SEWER EASEMENT
- SSCO - SANITARY SEWER CLEANOUT
- DE - DRAINAGE EASEMENT
- TP - TELEPHONE POLE
- DI - DRAINAGE INLET
- R/W - RIGHT-OF-WAY
- POB - POINT OF BEGINNING
- GV - GATE VALVE

UNABLE TO FIELD LOCATE MANHOLES
LOCATION AS PER DEED BOOK 4286, PAGE 381

N/F THE VILLAGES ASSOCIATES
DEED BOOK 3361, PAGE 418.

I HAVE, THIS DATE EXAMINED THE FHA
OFFICIAL FLOOD HAZARD MAP COMMUNITY
NO. 130226, PANEL NO. 0015, DATED
NOVEMBER 15, 1989, AND HAVE
DETERMINED THAT THIS PROPERTY IS NOT
IN AN AREA HAVING SPECIAL FLOOD
HAZARDS.

SURVEY AND PLAT

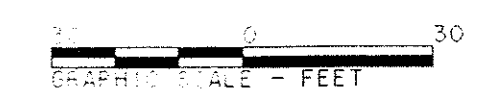
OF PROPERTY IN:
LAND LOT 645
17TH DISTRICT, 2ND SECTION
COBB COUNTY, GEORGIA

AUGUST 25, 1997

SCALE: 1" = 30'

PREPARED FOR:

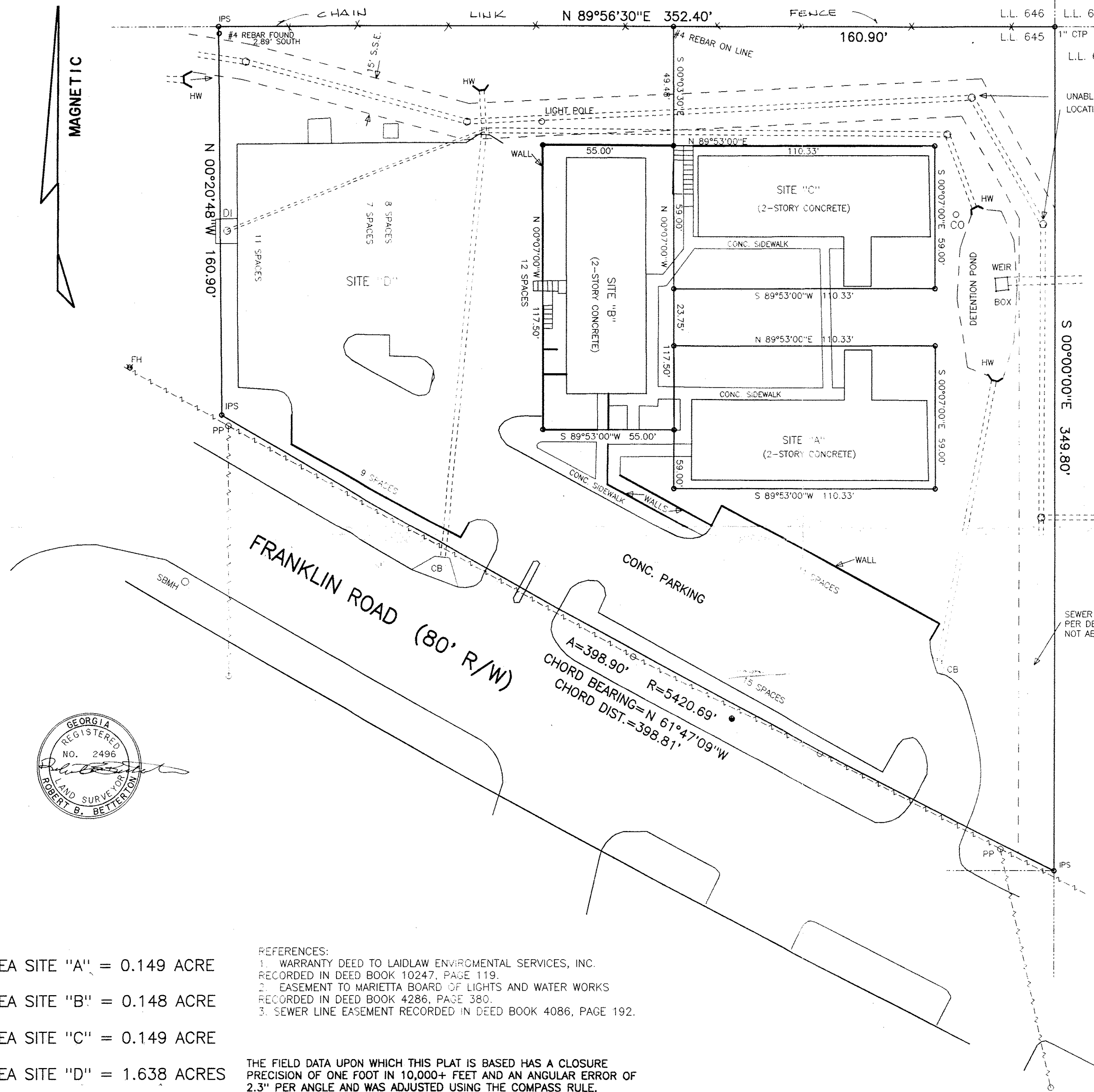
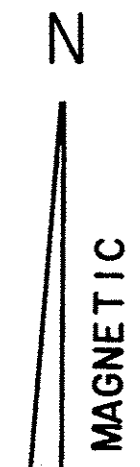
BUGG PROPERTIES, INC.



PREPARED BY:

HERNDON & BETTERTON, INC.

LAND SURVEYING/PLANNING
DEVELOPMENT DESIGN & SUPERVISION
1639 LOWER ROSWELL ROAD
MARIETTA, GEORGIA 30068
(770) 971-5079



- REFERENCES:
1. WARRANTY DEED TO LAIDLAW ENVIRONMENTAL SERVICES, INC.
RECORDED IN DEED BOOK 10247, PAGE 119.
 2. EASEMENT TO MARIETTA BOARD OF LIGHTS AND WATER WORKS
RECORDED IN DEED BOOK 4286, PAGE 380.
 3. SEWER LINE EASEMENT RECORDED IN DEED BOOK 4086, PAGE 192.

THE FIELD DATA UPON WHICH THIS PLAT IS BASED HAS A CLOSURE
PRECISION OF ONE FOOT IN 10,000+ FEET AND AN ANGULAR ERROR OF
2.3" PER ANGLE AND WAS ADJUSTED USING THE COMPASS RULE.

THIS PLAT HAS BEEN CALCULATED FOR CLOSURE AND HAS BEEN FOUND TO
BE ACCURATE WITHIN 1 FOOT IN 1,664,547 FEET.

- AREA SITE "A" = 0.149 ACRE
- AREA SITE "B" = 0.148 ACRE
- AREA SITE "C" = 0.149 ACRE
- AREA SITE "D" = 1.638 ACRES

97140