

**FUTURE COMMERCIAL DEVELOPMENT PROJECT ~ CITY OF SUGAR HILL JURISDICTION ~ PROPERTY IS CURRENTLY ZONED BG-BUSINESS GENERAL**

**REVISIONS**

ISSUE No. 1  
WATER MAIN RELOCATION PLAN  
INITIAL CONCEPT PLAN ISSUE.

PROFESSIONAL SEAL AND SIGNATURE



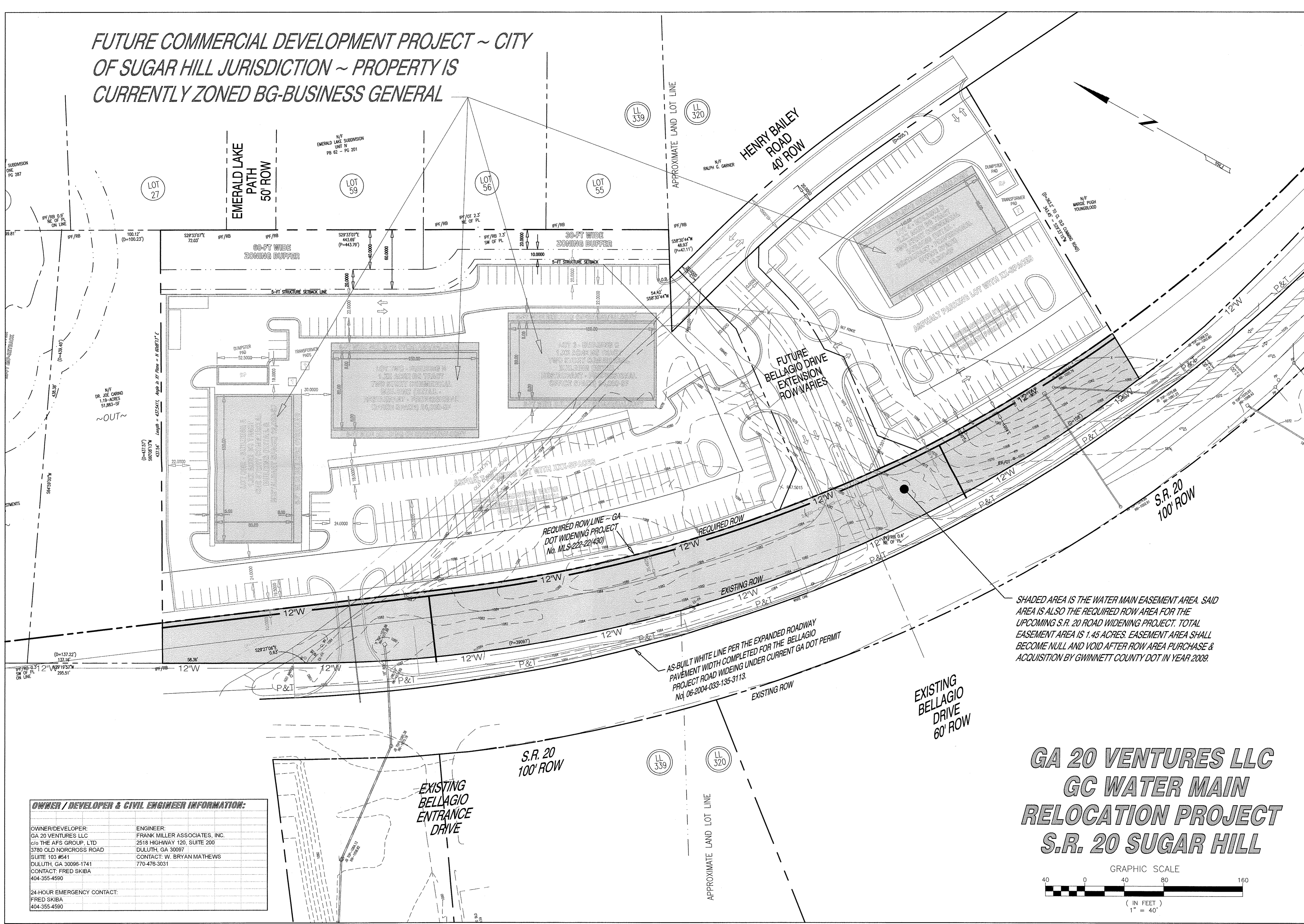
DATE

**FMA** Frank Miller Associates, Inc.  
CIVIL ENGINEERS ~ LAND PLANNERS ~ DEVELOPMENT CONSULTANTS  
2518 Duluth Highway 120, Suite 200, Duluth, Georgia 30097  
Tel: 770-476-3031 ~ FAX: 770-476-1036

**WATER MAIN RELOCATION PLAN**  
**GA 20 VENTURES, LLC**  
LAND LOT 320 & 339 ~ 7th DISTRICT ~ GWINNETT COUNTY, GEORGIA

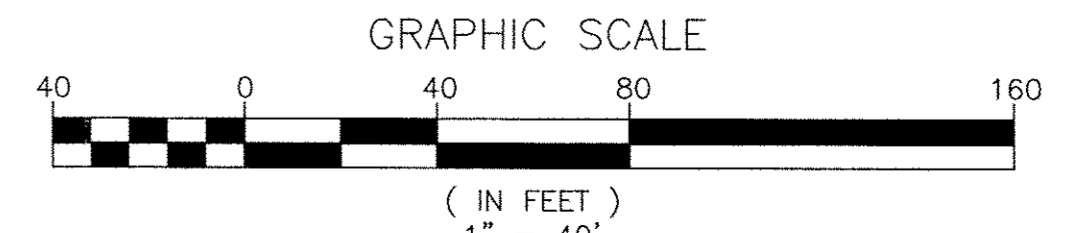
PROJECT NUMBER: 2005-011  
DATE: OCTOBER 14th, 2008  
DESIGNED BY: BRYAN MATHEWS  
APPROVED BY: FRANK MILLER, P.E.  
SCALE: AS SHOWN  
SHEET NUMBER

**WP**



SHADED AREA IS THE WATER MAIN EASEMENT AREA. SAID AREA IS ALSO THE REQUIRED ROW AREA FOR THE UPCOMING S.R. 20 ROAD WIDENING PROJECT. TOTAL EASEMENT AREA IS 1.45 ACRES. EASEMENT AREA SHALL BECOME NULL AND VOID AFTER ROW AREA PURCHASE & ACQUISITION BY GWINNETT COUNTY DOT IN YEAR 2009.

**GA 20 VENTURES LLC  
GC WATER MAIN  
RELOCATION PROJECT  
S.R. 20 SUGAR HILL**



**OWNER / DEVELOPER & CIVIL ENGINEER INFORMATION:**

OWNER/DEVELOPER: GA 20 VENTURES LLC c/o THE AFS GROUP, LTD 3790 OLD NORCROSS ROAD SUITE 103 #541 DULUTH, GA 30096-1741 CONTACT: FRED SKIBA 404-355-4590	ENGINEER: FRANK MILLER ASSOCIATES, INC. 2518 HIGHWAY 120, SUITE 200 DULUTH, GA 30097 CONTACT: W. BRYAN MATHEWS 770-476-3031
24-HOUR EMERGENCY CONTACT: FRED SKIBA 404-355-4590	