

NOTE:

THESE PLANS HAVE BEEN REVIEWED BY HENRY COUNTY FOR THE PURPOSE OF DETERMINING THE ADEQUACY OF THE LOTS FOR THE PROPOSED DETENTION-STORAGE. APPROVAL OF THESE PLANS BY HENRY COUNTY DOES NOT IN ANY WAY CONSTITUTE AN ASSUMPTION OF LIABILITY FOR THE CONSTRUCTION OF THE DAM AND/OR THE OPERATION OF THE DAM. THE DESIGNER SHALL BE RESPONSIBLE FOR THE DESIGN AND CONSTRUCTION OF THIS DAM AND SHALL BE THE RESPONSIBILITY OF THE DEVELOPER AND/OR THE HOMEOWNERS.

FILED IN OFFICE
SUPERIOR COURT
JAN 27 2005
3:15 PM
CLERK OF SUPERIOR COURT

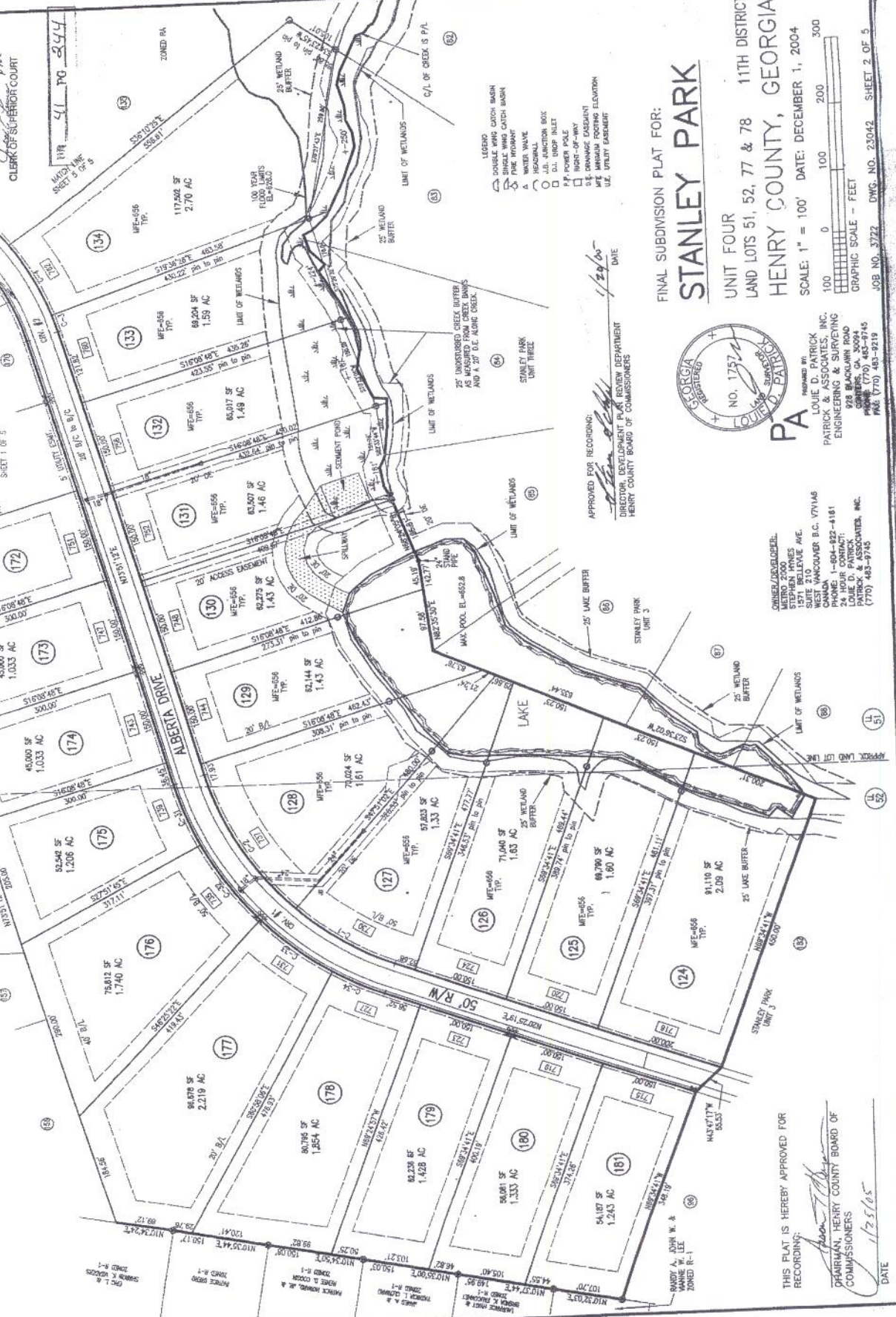
MAP NO. 41 PG. 244

MAG. NORTH

CURVE	RADIUS	CHORD	CHL-BEARING
C-1	471.73	171.85	S31°17'00"W
C-2	241.03	237.71	S56°00'05"W
C-3	28.20	28.19	N72°07'24"E
C-4	468.89	104.68	S82°04'44"W
C-5	152.54	152.54	S52°57'43"W
C-6	321.73	140.47	S37°25'31"W
C-7	321.73	88.72	S51°17'39"W

LOT CURVE DATA

THE FIELD DATA FROM WHICH THIS PLAN IS BASED HAS A CLOSURE PRECISION OF ONE FOOT IN 10,000 FEET AND AN ANGULAR ERROR OF 0.2" PER ANGLE POINT AND WAS ADJUSTED USING COMPASS RULE. THIS PLAN HAS BEEN CALCULATED FOR CLOSURE AND IS FOUND TO BE ACCURATE WITHIN ONE FOOT IN 10,000+ FEET.



FINAL SUBDIVISION PLAT FOR:

STANLEY PARK

UNIT FOUR
LAND LOTS 51, 52, 77 & 78
HENRY COUNTY, GEORGIA

SCALE: 1" = 100' DATE: DECEMBER 1, 2004



JOB NO. 3772 DWG. NO. 23042 SHEET 2 OF 5



PA
LOUIE D. PATRICK
PATRICK & ASSOCIATES, INC.
ENGINEERING & SURVEYING
228 BLACKLAIN ROAD
CONCORD, GA 30094
PHONE: (770) 483-9745
FAX: (770) 483-9218

APPROVED FOR RECORDING:
DIRECTOR, DEVELOPMENT PLAN REVIEW DEPARTMENT
HENRY COUNTY BOARD OF COMMISSIONERS

CONSEJ/DEVELOPER:
METRO 2000
1571 BELLEVUE AVE.
SUITE 210
ROSELAND, INDIANAPOLIS, IN 46208
PHONE: 1-800-822-4181
24 HOUR CONTACT:
PATRICK & ASSOCIATES, INC.
(770) 483-9745

THIS PLAT IS HEREBY APPROVED FOR RECORDING:
[Signature]
CHAIRMAN, HENRY COUNTY BOARD OF COMMISSIONERS

DATE 1/25/05

THE FIELD DATA UPON WHICH THIS PLAN IS BASED HAS A CLOSE PRECISION OF ONE FOOT IN 10,000 FEET AND AN ANGULAR ERROR OF 02" PER ANGLE POINT AND WAS ADJUSTED USING COMPASS RULE. THIS PLAN HAS BEEN CALCULATED FOR CLOSURE AND IS FOUND TO BE ACCURATE WITHIN ONE FOOT IN 10,000+ FEET.

PLANNING OFFICE
SUPERIOR COUNTY
JAN 27 2005
3:15
CLERK OF SUPERIOR COUNTY
PH: 411 PG 2445

MAG. NORTH

OWNER/DEVELOPER:
METRO 2000
5177 BELLEVUE AVE.
SUITE 210
WEST WANDOVER B.C. V7Y1A8
PHONE: 1-800-922-4181
FAX: 506-752-1111
PATRICK & ASSOCIATES, INC.
(779) 483-9745

FINAL SUBDIVISION PLAN FOR:
STANLEY PARK

UNIT FOUR
LAND LOTS 51, 52, 77 & 78
11TH DISTRICT
HENRY COUNTY, GEORGIA

SCALE: 1" = 100'
DATE: DECEMBER 1, 2004

JOB NO. 3722 DMC. NO. 23042 SHEET 3 OF 5



PA
DESIGNED BY
LOUIE D. PATRICK
PATRICK & ASSOCIATES, INC.
ENGINEERING & SURVEYING
808 BLACKLAWN ROAD
CONERS, GA 30094
PHONE: (770) 483-9745
FAX: (770) 483-9717



APPROVED FOR RECORDS: *[Signature]* 1/24/05 DATE

DIRECTOR, DEVELOPMENT PLAN REVIEW DEPARTMENT
HENRY COUNTY BOARD OF COMMISSIONERS

FILED IN OFFICE OF
HENRY COUNTY
SUPERIOR COURT
JAN 27 2005 9:15 AM
CLERK OF SUPERIOR COURT

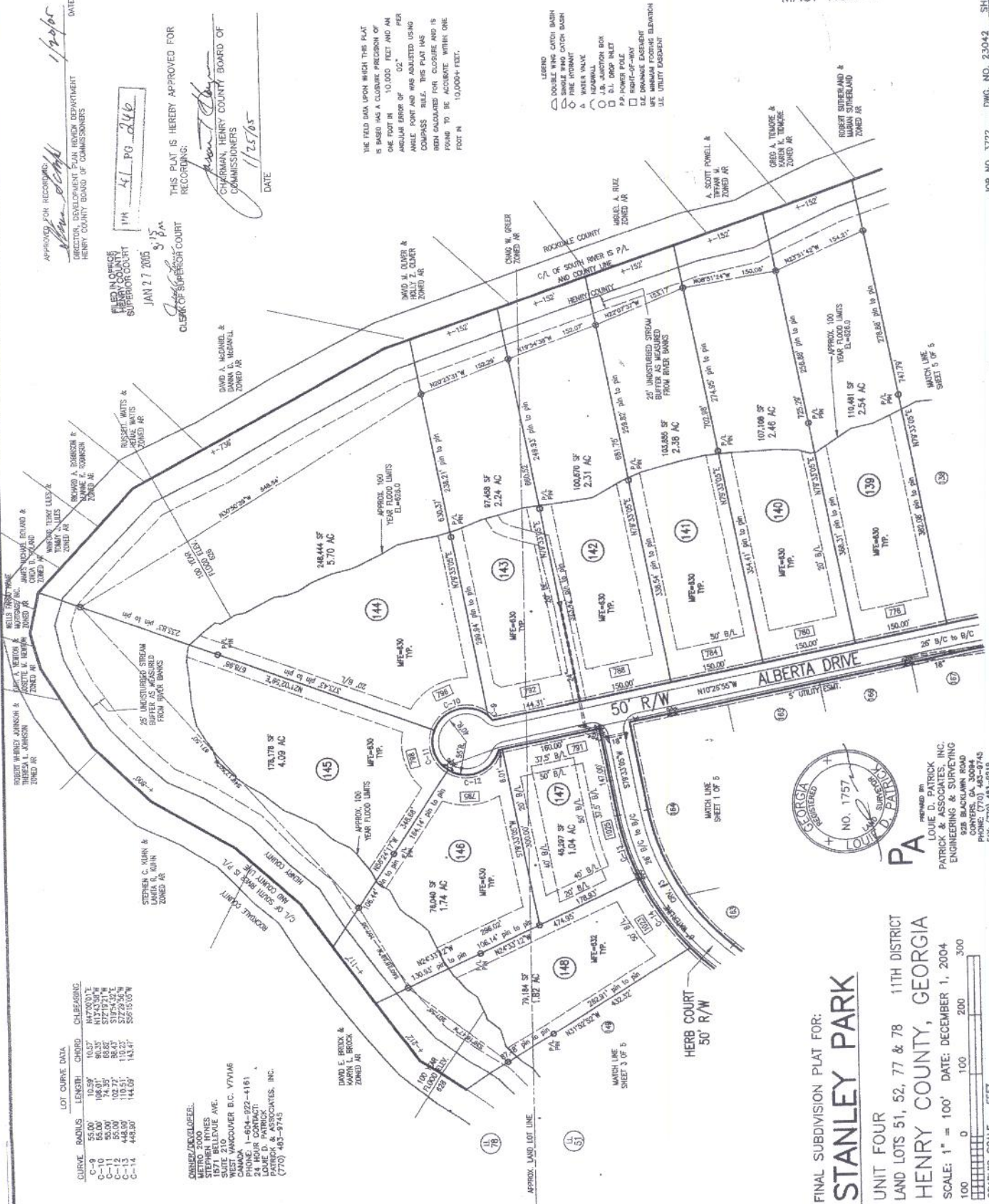
THIS PLAT IS HEREBY APPROVED FOR RECORDING:

[Signature]
CHAIRMAN, HENRY COUNTY BOARD OF COMMISSIONERS
1/25/05
DATE

THE FIELD DATA UPON WHICH THIS PLAT IS BASED HAS A CLOSEST PRECISION OF ONE FOOT IN 10,000 FEET AND AN ANGULAR ERROR OF 02 PER ANGLE POINT AND WAS ADJUSTED USING COMPASS RULE. THIS PLAT HAS BEEN CALCULATED FOR CLOSURE AND IS FOUND TO BE ACCURATE WITHIN ONE FOOT IN 10,000 FEET.

- LEGEND
- DOUBLE WING CATCH BASIN
 - SINGLE WING CATCH BASIN
 - FIRE HYDRANT
 - WATER VALVE
 - SEWER MANHOLE
 - SEWER JUNCTION BOX
 - W.P. POWER POLE
 - RIGHT-OF-WAY
 - DE DRAINAGE EASEMENT
 - USE MINIMUM FOOTING ELEVATION
 - USE UNBUILT EASEMENT

MAG. NORTH



PA
LOUIE D. PATRICK
ENGINEERING & SURVEYING
928 BLACKLAWN ROAD
CORNER, GA 30094
PHONE (770) 463-9219
FAX (770) 463-9219

FINAL SUBDIVISION PLAT FOR:
STANLEY PARK
UNIT FOUR
LAND LOTS 51, 52, 77 & 78 11TH DISTRICT
HENRY COUNTY, GEORGIA
SCALE: 1" = 100' DATE: DECEMBER 1, 2004

