

DWIGHT KIRBY COMMON AREA TO BE CONVEYED TO THE ANNELISE PARK COMMUNITY ASSOCIATION, INC.

RIGHT OF WAY LINE DATA

COURSE	BEARING	DISTANCE
C-1	N 71°24'31"E	723.48'
C-2	S 77°45'30"E	87.85'
C-3	N 1°21'18"30"E	168.58'
C-4	S 77°45'30"E	168.58'
C-5	S 77°45'30"E	20.00'
C-6	S 77°43'30"E	164.91'
C-7	S 32°42'48"W	53.85'
C-8	N 33°42'48"W	251.00'
C-9	N 62°07'20"W	133.22'
C-10	N 12°22'28"W	123.54'
C-11	N 09°57'58"W	269.78'
C-12	N 1°18'04"W	245.93'
C-13	N 04°50'17"W	130.26'
C-14	N 14°00'30"W	280.00'
C-15	N 38°04'35"W	378.13'
C-16	N 64°54'47"W	140.83'
C-17	S 20°07'07"E	248.84'
C-18	S 29°17'17"E	125.23'
C-19	S 59°11'03"E	187.37'
C-20	S 38°40'22"E	106.38'
C-21	S 10°15'40"E	153.38'
C-22	S 00°30'14"W	157.18'
C-23	N 10°47'29"E	162.00'
C-24	N 10°47'29"E	162.00'
C-25	N 04°50'53"W	237.04'
C-26	N 02°50'55"E	124.05'
C-27	N 02°50'55"E	124.05'
C-28	N 02°50'55"E	124.05'
C-29	N 04°14'21"E	271.40'
C-30	N 18°14'21"E	268.44'
C-31	S 64°04'47"E	186.04'
C-32	S 38°04'35"E	313.59'
C-33	S 14°00'30"E	256.44'
C-34	S 08°00'17"E	134.98'
C-35	S 1°18'04"E	263.83'
C-36	S 29°17'17"E	267.08'
C-37	S 18°00'59"E	121.46'
C-38	S 28°07'20"E	170.33'
C-39	S 38°42'48"E	317.87'
C-40	S 23°52'18"E	325.38'
C-41	N 14°22'33"E	268.20'
C-42	S 14°22'33"E	268.20'
C-43	N 38°04'35"E	268.73'
C-44	N 38°04'35"E	233.44'
C-45	N 02°50'55"E	247.48'
C-46	N 23°52'18"E	294.77'
C-47	N 37°01'15"E	408.41'
C-48	N 11°18'04"E	262.08'
C-49	N 08°14'41"E	136.83'
C-50	N 02°48'44"E	414.43'
C-51	S 08°45'28"E	812.77'
C-52	S 23°00'32"W	163.24'
C-53	S 38°25'20"W	187.71'
C-54	S 74°40'00"W	130.01'
C-55	S 74°40'00"W	130.01'
C-56	S 74°40'00"W	214.30'
C-57	S 74°40'00"W	401.08'
C-58	N 14°00'30"E	728.88'
C-59	N 34°18'00"E	167.61'
C-60	N 23°00'32"E	163.83'
C-61	N 08°48'17"E	36.62'

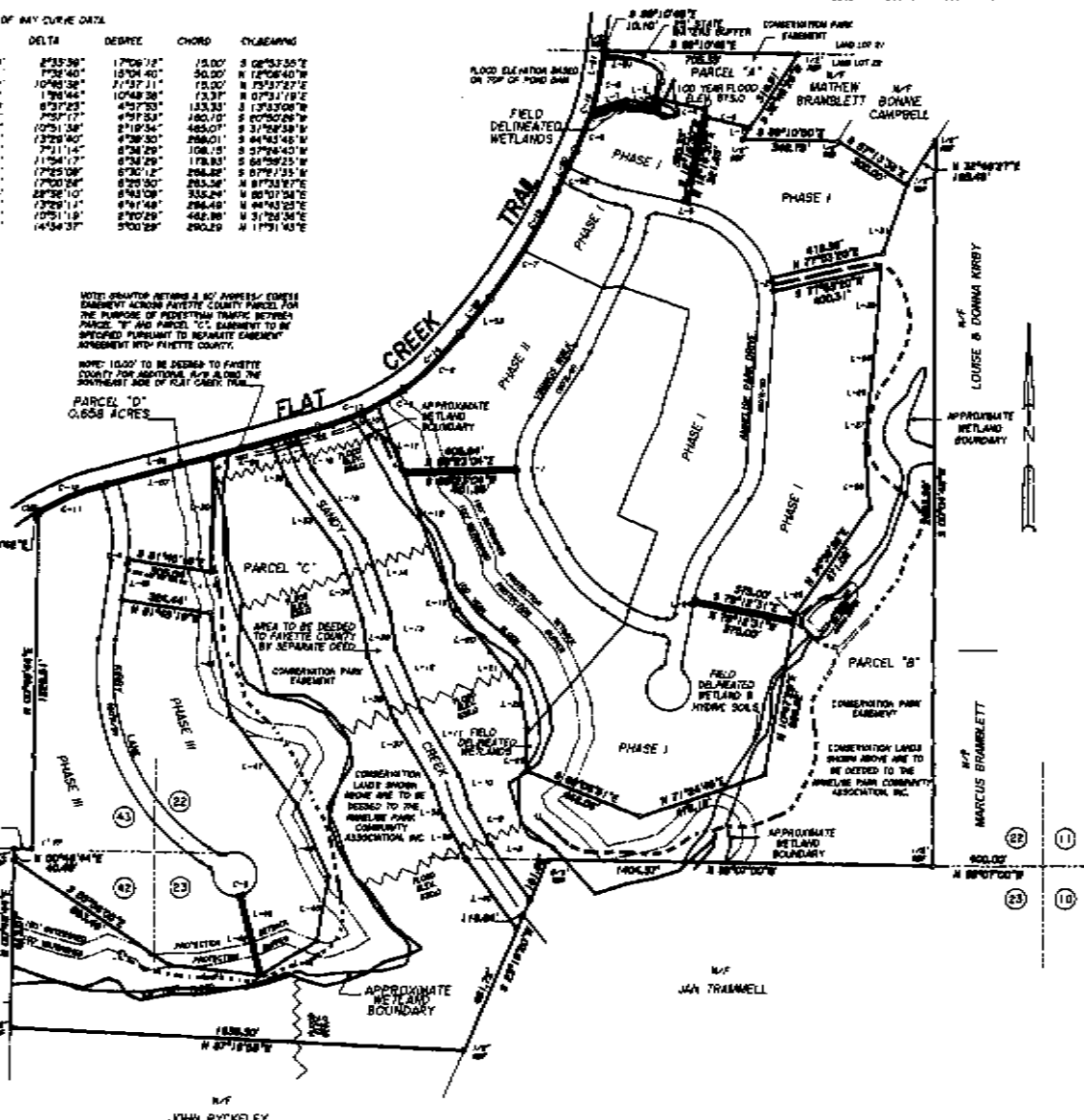
RIGHT OF WAY CURVE DATA

CURVE	RADIUS	TANGENT	LENGTH	DELTA	DEGREE	CHORD	CHANGING
C-1	533.00'	7.50'	13.00'	2°33'30"	1706°12'	15.00'	S 02°53'55"E
C-2	380.00'	23.08'	50.00'	17°28'40"	1574°40'	50.00'	N 12°08'40"W
C-3	80.00'	7.03'	13.02'	10°48'38"	71°37'11"	13.02'	N 79°37'27"E
C-4	330.00'	8.88'	13.37'	1°48'44"	1048°28"	13.37'	N 07°31'18"E
C-5	1754.08'	46.78'	133.40'	6°37'23"	47°37'33"	133.33'	S 1°33'08"W
C-6	1134.08'	80.24'	160.23'	12°51'17"	125°11'58"	149.75'	S 07°50'28"W
C-7	2457.18'	233.34'	463.77'	10°51'58"	218°54'3"	463.07'	S 31°28'58"W
C-8	1228.65'	143.51'	249.64'	13°29'40"	178°30'1"	249.01'	S 24°33'48"W
C-9	982.71'	54.18'	108.22'	7°11'14"	128°29'	108.15'	S 37°24'40"W
C-10	898.71'	26.82'	178.23'	17°54'17"	178°29'	178.83'	S 64°58'25"W
C-11	881.01'	134.86'	267.80'	17°25'38"	670°12'	264.38'	S 07°11'55"W
C-12	881.01'	133.85'	264.48'	17°20'30"	670°30'	263.38'	N 87°33'87"E
C-13	836.71'	188.80'	335.40'	22°38'10"	843°08'	335.24'	N 88°07'58"E
C-14	1218.08'	194.24'	287.16'	17°32'11"	471°48'	286.48'	N 44°43'22"E
C-15	2447.18'	232.58'	463.80'	10°51'18"	270°28'	462.88'	N 31°28'34"E
C-16	1144.08'	146.33'	251.00'	14°54'37"	570°28'	249.28'	N 17°51'43"E

ACREAGE
 PARCEL "A" 3.327 ACRES
 PARCEL "B" 37.312 ACRES
 PARCEL "C" 36.638 ACRES
 PARCEL "D" 0.658 ACRES
 COUNTY STREAM BUFFER 4.510 ACRES

NOTE: RIGHTS RETURN & NO ADDRESS CORRECTION EASEMENT ACROSS FAYETTE COUNTY PARCEL FOR THE PURPOSE OF PEDESTRIAN TRAFFIC BETWEEN PARCEL "A" AND PARCEL "C" EASEMENT TO BE SPECIFIED PURSUANT TO SEPARATE EASEMENT AGREEMENT INTO FAYETTE COUNTY.

NOTE: 10.00' TO BE DEEDED TO FAYETTE COUNTY FOR ADDITIONAL USE & ONLY TO THE SOUTHWEST CORNER OF FLAT CREEK TRAIL.



GEORGIA FAYETTE COUNTY
 Field and Record Book
 Book 22 Page 112
Deborah

John Ryckley
 11-19-04

BERNHARD, HARPER & ASSOCIATES, INC.
 180 EAST BARR STREET - P.O. BOX 865 - 80119, GEORGIA 30286
 TEL: (770) 227-0816 FAX: (770) 227-8247



COURSE	BEARING	DISTANCE
L-1	S 25°00'30"E	35.41'
L-2	S 77°18'30"E	40.03'
L-3	S 72°18'30"E	50.03'
L-4	S 12°18'30"E	50.03'
L-5	S 78°00'00"E	13.56'
L-6	S 25°00'30"E	60.77'
L-7	S 25°20'00"E	14.00'

CURVE	RADIUS	TANGENT	POINT OF CURVE	LENGTH	DELTA	CHORD	CHORD BEARING
C-1	25.00'	25.00'	39.67'	50°00'00"	22°10'36"	25.38'	S 54°54'30"E
C-2	25.00'	25.00'	39.67'	50°00'00"	22°10'36"	25.38'	S 67°18'30"E

CURVE	RADIUS	TANGENT	LENGTH	DELTA	CHORD	CHORD BEARING
C-1	400.00'	400.00'	81.83'	17°01'41"	447.628'	S 77°17'30"E
C-2	300.00'	300.00'	60.86'	17°02'12"	498.00'	S 56°54'30"E
C-3	250.00'	250.00'	50.70'	17°02'12"	421.11'	S 19°08'30"E
C-4	400.00'	400.00'	81.83'	17°01'41"	447.628'	S 67°18'30"E
C-5	300.00'	300.00'	60.86'	17°02'12"	498.00'	S 19°08'30"E

STATION	AGE	LENGTH	SLOPE	TOP
1+00	18" x 18"	25.00'	0.40%	862.11
1+25	18" x 18"	25.00'	0.40%	862.24
1+50	18" x 18"	25.00'	0.40%	862.37
1+75	18" x 18"	25.00'	0.40%	862.50
2+00	18" x 18"	25.00'	0.40%	862.63
2+25	18" x 18"	25.00'	0.40%	862.76
2+50	18" x 18"	25.00'	0.40%	862.89
2+75	18" x 18"	25.00'	0.40%	863.02
3+00	18" x 18"	25.00'	0.40%	863.15
3+25	18" x 18"	25.00'	0.40%	863.28
3+50	18" x 18"	25.00'	0.40%	863.41
3+75	18" x 18"	25.00'	0.40%	863.54
4+00	18" x 18"	25.00'	0.40%	863.67
4+25	18" x 18"	25.00'	0.40%	863.80
4+50	18" x 18"	25.00'	0.40%	863.93
4+75	18" x 18"	25.00'	0.40%	864.06
5+00	18" x 18"	25.00'	0.40%	864.19
5+25	18" x 18"	25.00'	0.40%	864.32
5+50	18" x 18"	25.00'	0.40%	864.45
5+75	18" x 18"	25.00'	0.40%	864.58
6+00	18" x 18"	25.00'	0.40%	864.71
6+25	18" x 18"	25.00'	0.40%	864.84
6+50	18" x 18"	25.00'	0.40%	864.97
6+75	18" x 18"	25.00'	0.40%	865.10
7+00	18" x 18"	25.00'	0.40%	865.23
7+25	18" x 18"	25.00'	0.40%	865.36
7+50	18" x 18"	25.00'	0.40%	865.49
7+75	18" x 18"	25.00'	0.40%	865.62
8+00	18" x 18"	25.00'	0.40%	865.75
8+25	18" x 18"	25.00'	0.40%	865.88
8+50	18" x 18"	25.00'	0.40%	866.01
8+75	18" x 18"	25.00'	0.40%	866.14
9+00	18" x 18"	25.00'	0.40%	866.27

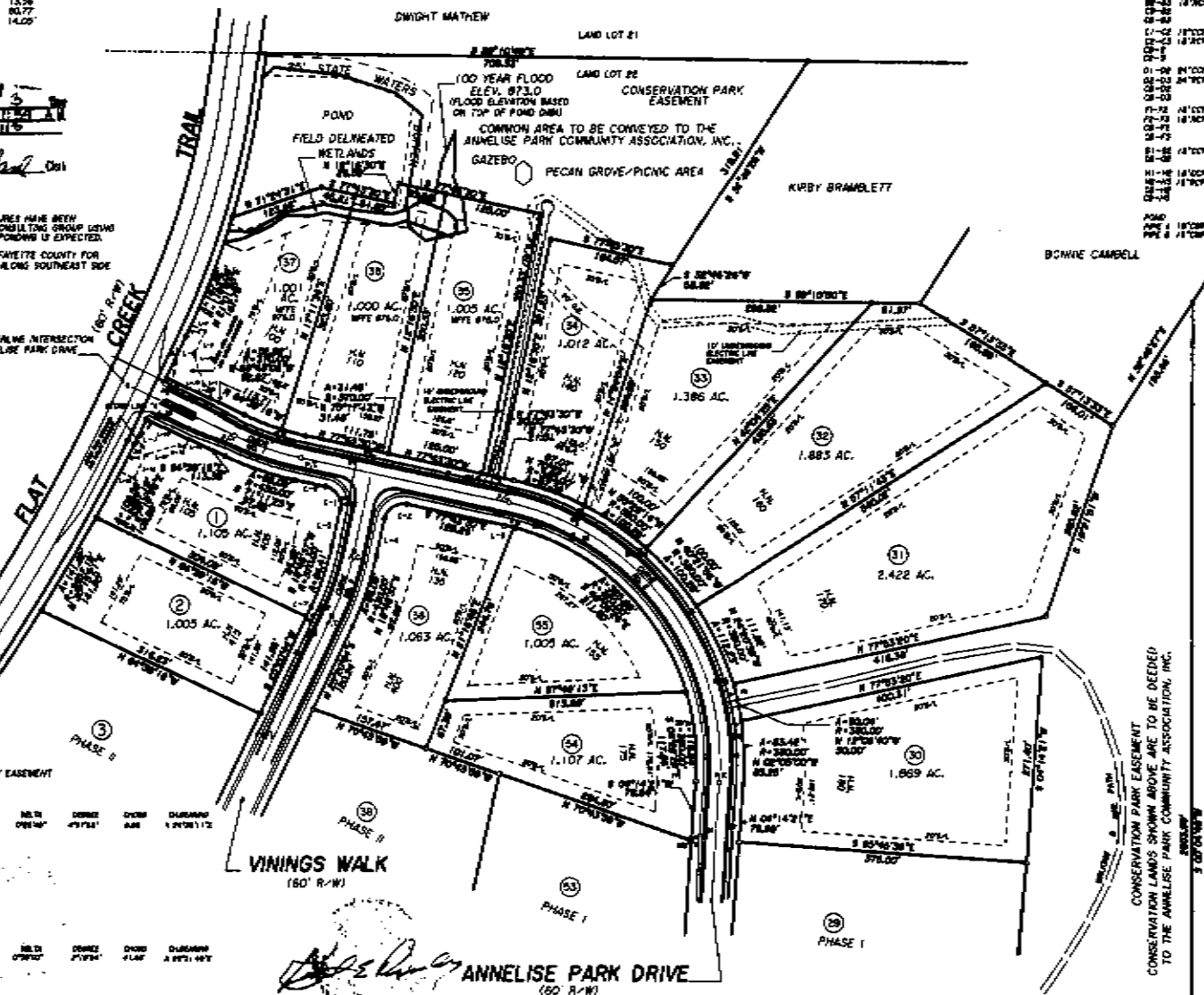
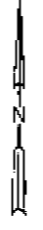
BERNHARD, HARPER & ASSOCIATES, INC.
 50 EAST 48th STREET - P.O. BOX 201 - ATLANTA, GEORGIA 30301
 (404) 525-1100 FAX (404) 525-1101

John D. Baker Civil

NOTE: ALL STORM DRAIN STRUCTURES HAVE BEEN
 EVALUATED BY PARAGON CONSULTING GROUP (CIVIL)
 100 YEAR FLOOD AND NO FLOWING IS EXPECTED.

NOTE: 1000' TO BE DEDED TO WAYTE COUNTY FOR
 ADDITIONAL RIGHT OF WAY ALONG SOUTHEAST SIDE
 OF FLAT CREEK TRAIL.

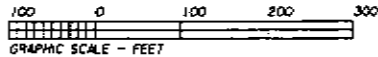
BENCHMARK NAIL SET IN CENTERLINE INTERSECTION
 OF FLAT CREEK TRAIL AND ANNELISE PARK DRIVE
 ELEVATION 860.45



COURSE	BEARING	ENTRANCE
L-1	S 25°00'30"E	8647'
L-2	S 77°18'30"E	8647'
L-3	S 72°18'30"E	8647'
L-4	S 12°18'30"E	8647'
L-5	S 78°00'00"E	8647'
L-6	S 25°00'30"E	8647'
L-7	S 25°20'00"E	8647'

BERNHARD, HARPER & ASSOCIATES, INC.
 50 EAST 48th STREET - P.O. BOX 201 - ATLANTA, GEORGIA 30301
 (404) 525-1100 FAX (404) 525-1101

11-10-04

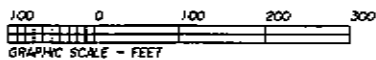


BERNHARD, HARPER & ASSOCIATES, INC.
 120 EAST BANK STREET - P.O. BOX 583 - BUFFALO, NEW YORK 14240
 PHONE (716) 837-2611 FAX (716) 837-2647

[Handwritten Signature]



COURSE	BEARING	DISTANCE
C-1	N 79°12'37"	36.00'



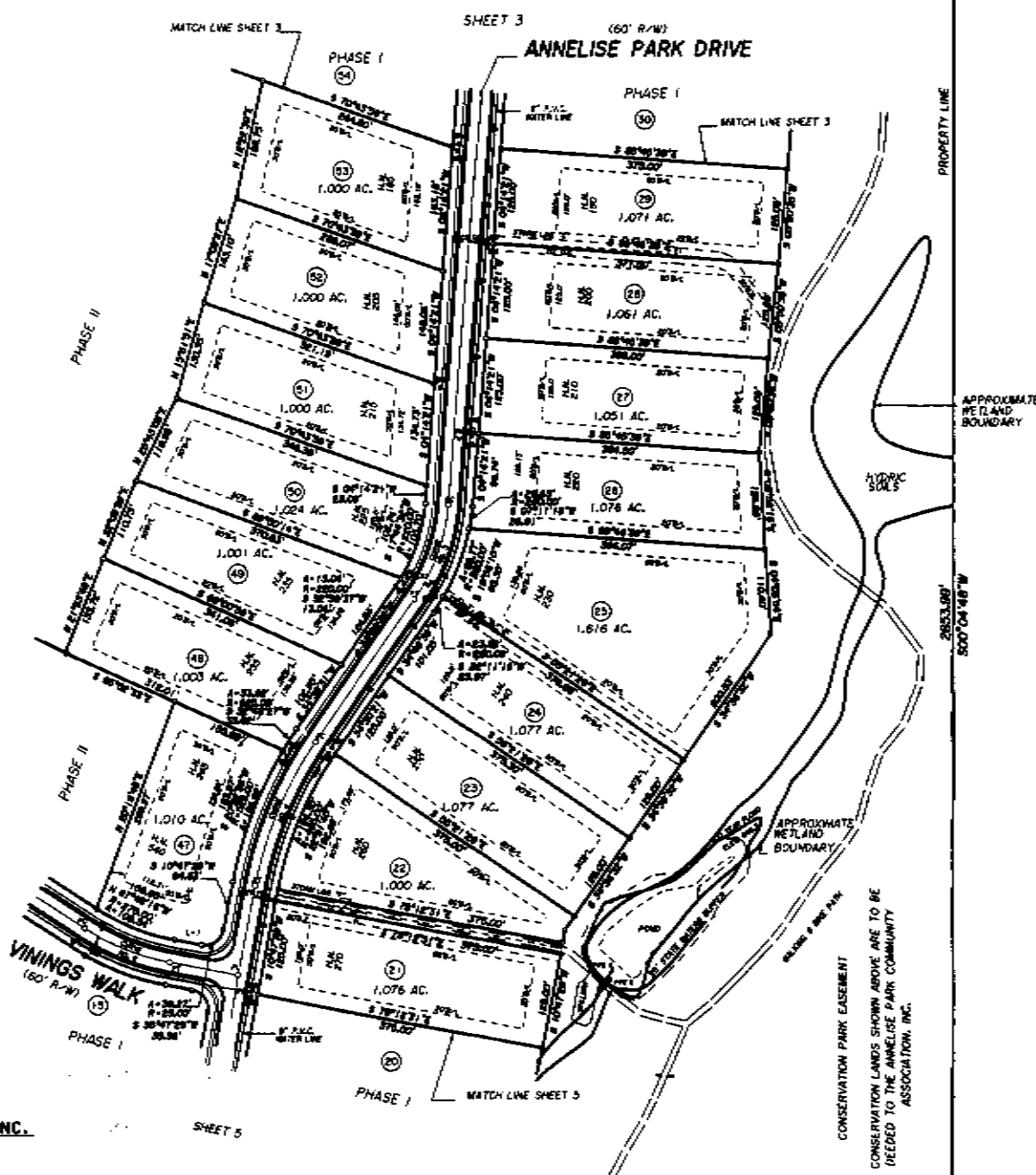
GRAPHIC SCALE - FEET

[Handwritten Signature]

11-18-04



BERNHARD, HARPER & ASSOCIATES, INC.
 120 EAST BANK STREET - P.O. BOX 583 - BUFFALO, NEW YORK 14240
 PHONE (716) 837-2611 FAX (716) 837-2647



LOUISE B. DONNA KIRBY

CONSERVATION LANDS SHOWN ABOVE ARE TO BE
 DEED TO THE ANNELISE PARK COMMUNITY
 ASSOCIATION, INC.

LOTS 19 - 20

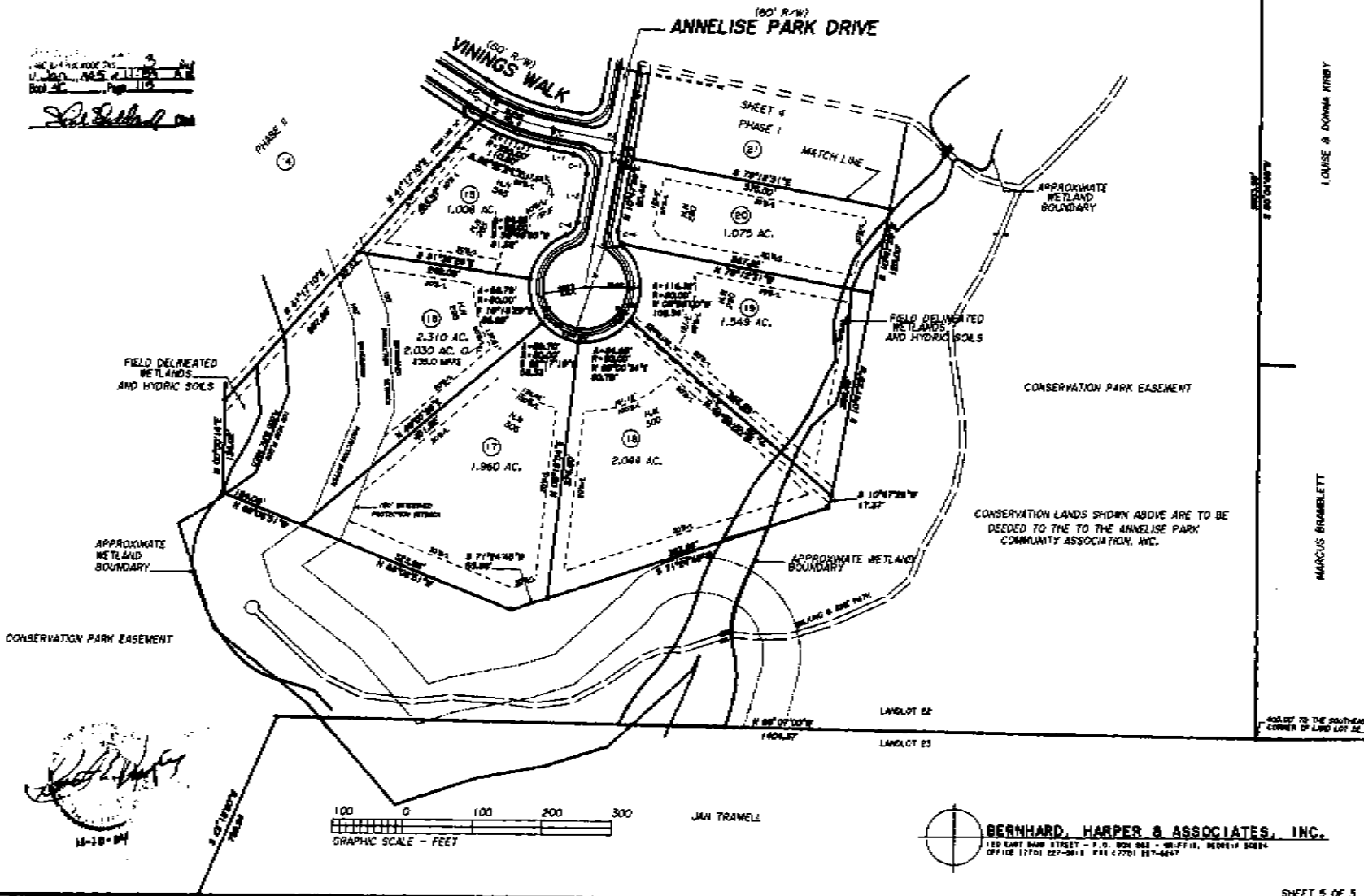
COURSE	BEARING	DISTANCE
L-1	S 79°12'31"E	56.07'
L-2	S 104°17'59"W	71.83'

ROVT OF 90% CURVE DATA							
CURVE	RADIUS	TANGENT	LENGTH	DELTA	DEGREE	CHORD	CH. BEARING
C-1	25.00'	25.00'	39.87'	80°00'00"	89°10'59"	35.36'	S 84°12'31"E
C-2	25.00'	15.98'	131.56'	301°28'17"	82°10'59"	24.40'	S 109°59'30"W
C-3	25.00'	6.80'	5.77'	137°15'46"	89°10'59"	5.75'	N 41°00'20"W
C-4	25.00'	10.40'	18.71'	48°10'33"	29°10'39"	18.21'	N 11°47'58"W

SCALE
 1" = 100'
 1/4" = 25'
 1/8" = 12.5'
 1/16" = 6.25'

John Trammell

SHEET 4



LOUISE & DONNA KIRBY

MARCUS BRAMBLETT

400.00' TO THE SOUTHWEST CORNER OF LAND LOT 22.

BERNHARD, HARPER & ASSOCIATES, INC.
 1120 EAST BARR STREET - P. O. BOX 262 - WILFRED, MONTANA 59454
 OFFICE (476) 227-9613 FAX (476) 227-6627