

LAND SURVEYING
 LAND PLANNING
 CONSTRUCTION LAYOUT
 LAND DEVELOPMENT DESIGN
 SIBLEY SURVEYING, INC.
 310 RACETRACK ROAD
 MCDONOUGH, GA. 30252
 PH (770) 320-7555
 FAX (770) 320-7333

FINAL PLAN
STRATFORD PLACE
LAND LOT 17, 18, 8TH DISTRICT
HENRY COUNTY, GEORGIA



PROJECT NO. D04040
 DRAWN BY: VHC
 SCALE: 1" = 100'
 DATE: 05/08/2006
 SHEET: 4 OF 5



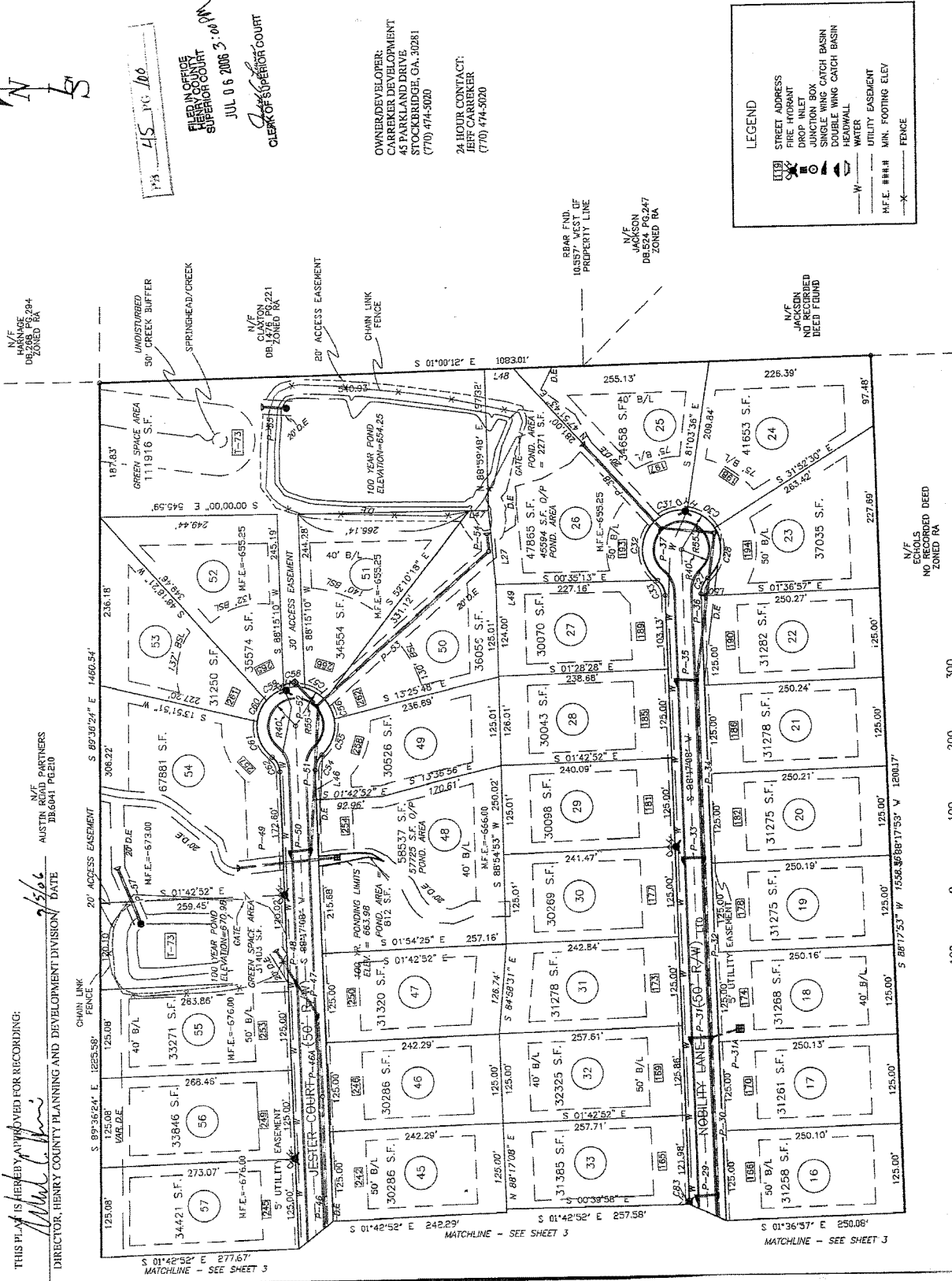
FILED IN OFFICE
 HENRY COUNTY
 SUPERIOR COURT
 JUL 06 2006 3:00 PM
 CLERK OF SUPERIOR COURT

OWNER/DEVELOPER:
 PARKER DEVELOPMENT
 45 PARKLAND DRIVE
 STOCKBRIDGE, GA. 30281
 (770) 474-5000

24 HOUR CONTACT:
 JEFF CARREKER
 (770) 474-5020

LEGEND

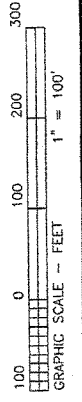
- [119] STREET ADDRESS
- FIRE HYDRANT
- DROP INLET
- JUNCTION BOX
- SINGLE WING CATCH BASIN
- DOUBLE WING CATCH BASIN
- HEADWALL
- WATER
- UTILITY EASEMENT
- MIN. FOOTING ELEV.
- FENCE



THIS PLAN IS HEREBY APPROVED FOR RECORDING:
John Blake
 6/30/06
 DIRECTOR, DEVELOPMENT PLAN REVIEW DEPARTMENT
 HENRY COUNTY BOARD OF COMMISSIONERS

THIS PLAN IS HEREBY APPROVED FOR RECORDING:
Robert C. Patti
 6/15/06
 DIRECTOR, HENRY COUNTY PLANNING AND DEVELOPMENT DIVISION

AUSTIN N/F PARTNERS
 218.6441 DEED



LAND SURVEYING
LAND PLANNING
CONSTRUCTION LAYOUT
LAND DEVELOPMENT DESIGN

310 RACETRACK ROAD
MCDONOUGH, GA 30252
PH (770) 320-7555
FAX (770) 320-7333

STRATFORD PLACE
LAND LOT #17, 18, 8TH DISTRICT
HENRY COUNTY, GEORGIA

FINAL PLAT



PROJECT NO. D04040
DRAWN BY: VHC
SCALE: 1" = 100'
DATE: 05/22/2006
SHEET: 3 OF 5

N/T
AUSTIN ROAD PARTNERS
DB-6041 P-210

FILED IN OFFICE
HENRY COUNTY
SUPERIOR COURT
JUL 06 2006
CLERK OF SUPERIOR COURT

- LEGEND
- STREET ADDRESS
 - GOLF FAIRWAY
 - FIRE HYDRANT
 - TRASH BOX
 - SINGLE WING CATCH BASIN
 - DOUBLE WING CATCH BASIN
 - HEADWALL
 - UTILITY EASEMENT
 - WATER
 - MIN. FOOTING ELEV.

THIS PLAT IS HEREBY APPROVED FOR RECORDING:
[Signature]
DATE: 6/19/06
DIRECTOR, DEVELOPMENT PLAN REVIEW DEPARTMENT
HENRY COUNTY BOARD OF COMMISSIONERS

THIS PLAT IS HEREBY APPROVED FOR RECORDING:
[Signature]
DATE: 7/5/06
DIRECTOR, HENRY COUNTY PLANNING AND DEVELOPMENT DIVISION

OWNER/DEVELOPER:
CARREKER DEVELOPMENT
45 PARKLAND DRIVE
STOCKBRIDGE, GA 30281
(770) 474-5020

24 HOUR CONTACT:
JEFF CARREKER
(770) 474-5020

N/T
MOUNT BETHEL
UNITED METHODIST CHURCH
DUNWOODY POCKET
ZONED RA

