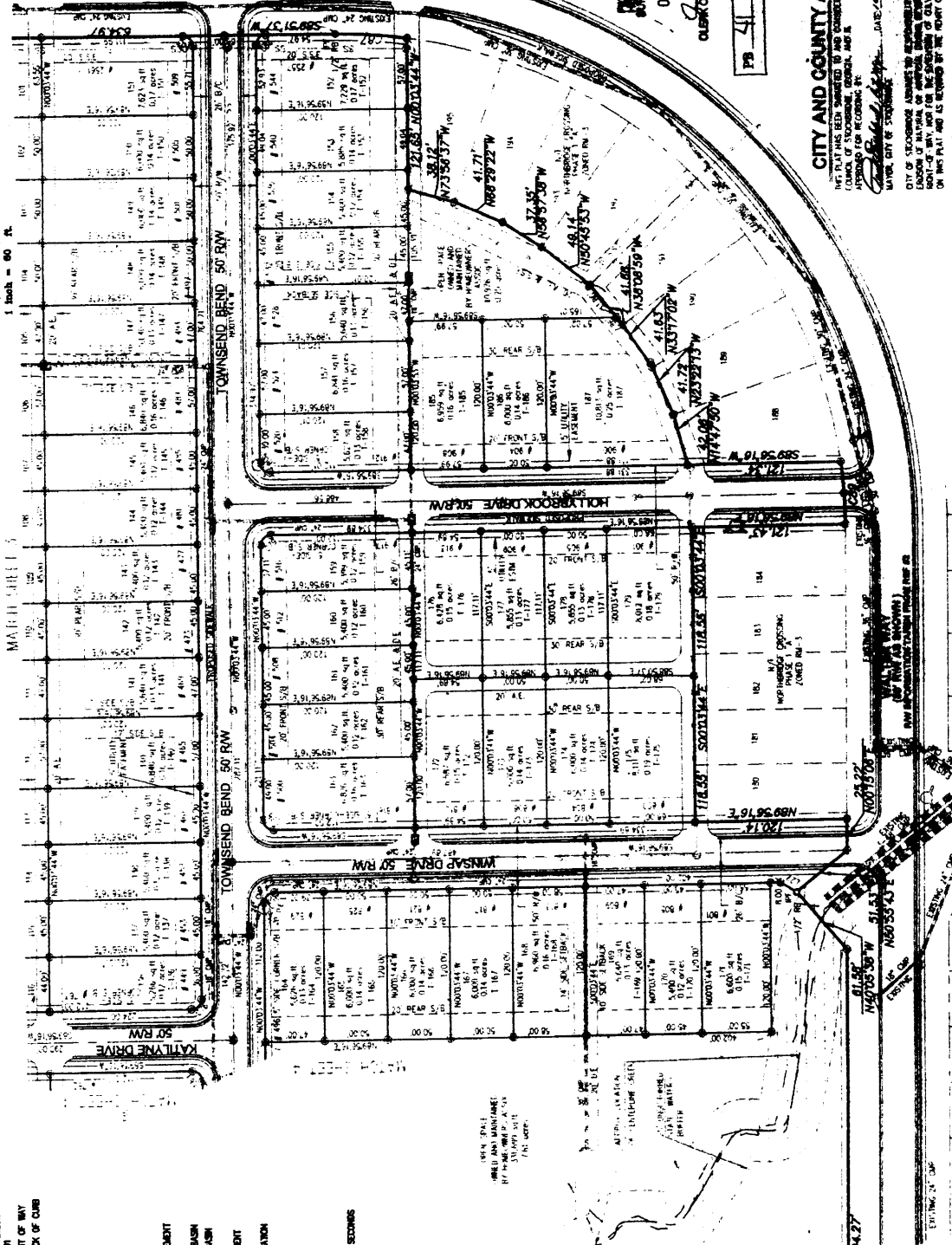




GRAPHIC SCALE



- LEGEND**
- 100' RW FOUND (PT)
  - 1/2" BEAR PLACED W/YELLOW
  - CAP STAMPED 10/50 2001
  - R/W RIGHT OF WAY TO RIGHT OF WAY
  - B/C BACK OF CURB TO BACK OF CURB
  - A.E. ACCESS EASEMENT
  - SEWER MANHOLE
  - SANITARY SEWER LINE
  - FIRE HYDRANT
  - WATER VALVE
  - WATER LINE
  - LE DRAINAGE EASEMENT
  - SEE SANITARY SEWER EASEMENT
  - SEE WATER MAIN EASEMENT
  - SINGLE WING CURB BASH
  - DOUBLE WING CURB BASH
  - POINT OF FORWARD
  - POINT OF CURBING
  - PALE POINT OF CURBING
  - EXIST. WATER SURFACE ELEVATION
  - RETAINING BUFFER
  - STATE WATER BUFFER
  - 3/4" SETBACK
  - 4' S. SETBACK FEET
  - SHORTEST CORNER, MOUNTS & SECOND

1. 5/8" MARK SHALL BE METALLED  
 2. ALL DIMENSIONS SHALL BE TO THE CENTERLINE UNLESS OTHERWISE NOTED  
 3. ALL SETBACKS SHALL BE 7' BEARING  
 4. ALL SETBACKS SHALL BE 7' BEARING

READ IN OFFICE  
 HENRY COUNTY  
 SUPERIOR COUNTY  
 OCT 11 2004 2:40pm  
 CLERK OF SUPERIOR COURT

PG 41 PG 108

**CITY AND COUNTY APPROVAL**  
 THE PLAN HAS BEEN SUBMITTED TO AND APPROVED BY THE BOARD OF CITY ENGINEERS AND THE BOARD OF COUNTY ENGINEERS FOR RECORDING IN THE CITY AND COUNTY RECORDS.

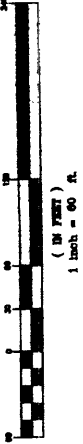
APPROVED BY: *[Signature]*  
 DATE: 10/11/04  
 TITLE: CLERK OF SUPERIOR COURT

<b>North Bass</b>		2 OF 6
<b>COMBUSTION</b>		ATLANTA
PROJECT		Northbridge Crossing Phase 1-B
CLIENT NAME		DRA Development, Inc. 45 Piedmont Drive Stockbridge, GA 30281
SHEET TITLE		Final Subdivision Plat
City of Northbridge		Lead Lots 97 & 98 - 12th District Henry County, Georgia
REVISIONS		
DATE	BY/WH	1. 1/2004 Addressed county comments
FILE #	08-046	2. 10/2004 Landmark table updates
CONTRACT #	08-001	
DRAWN BY	PNC	
CHECKED BY	MB	





**GRAPHIC SCALE**



**CITY AND COUNTY APPROVAL**

THIS PLAN HAS BEEN SUBMITTED TO AND APPROVED BY THE BOARD OF SUPERVISORS OF THE COUNTY OF STOCKDALE, CALIFORNIA, AND IS APPROVED FOR RECORDING BY THE CITY OF STOCKDALE, CALIFORNIA, ON THIS DATE AND AS REQUIRED BY THE HEAVY COUNTY SUBDIVISION ORDINANCES.

APPROVED BY: *[Signature]* DATE: 10/19/64  
DIRECTOR HEAVY COUNTY DEVELOPMENT PLAN REVIEW  
HEAVY COUNTY BOARD OF COMMISSIONERS

APPROVED BY: *[Signature]* DATE: 10/19/64  
CLERK OF SUPERIOR COURT

OCT 11 2004 2:00 PM

CLERK OF SUPERIOR COURT

PB 4 PG 71

A LEGIBLE ORIGINAL IS REQUIRED TO BE FILED WITH THIS PLAN. ALL INFORMATION ON THIS PLAN IS SUBJECT TO THE COUNTY'S RECORDS AND IS NOT TO BE REPRODUCED OR COPIED IN ANY MANNER WITHOUT THE WRITTEN PERMISSION OF THE COUNTY OF STOCKDALE.

**NOTICES**

1. THIS PLAN IS SUBJECT TO THE CITY OF STOCKDALE'S SUBDIVISION ORDINANCES AND THE COUNTY OF STOCKDALE'S SUBDIVISION ORDINANCES.

2. THE CITY OF STOCKDALE AND THE COUNTY OF STOCKDALE ARE NOT RESPONSIBLE FOR THE ACCURACY OF THE INFORMATION ON THIS PLAN.

3. THE CITY OF STOCKDALE AND THE COUNTY OF STOCKDALE ARE NOT RESPONSIBLE FOR THE CONSEQUENCES OF ANY ERRORS OR OMISSIONS ON THIS PLAN.

4. THE CITY OF STOCKDALE AND THE COUNTY OF STOCKDALE ARE NOT RESPONSIBLE FOR THE CONSEQUENCES OF ANY CHANGES TO THIS PLAN.

5. THE CITY OF STOCKDALE AND THE COUNTY OF STOCKDALE ARE NOT RESPONSIBLE FOR THE CONSEQUENCES OF ANY VIOLATIONS OF THIS PLAN.

6. THE CITY OF STOCKDALE AND THE COUNTY OF STOCKDALE ARE NOT RESPONSIBLE FOR THE CONSEQUENCES OF ANY UNLAWFUL ACTS.

7. THE CITY OF STOCKDALE AND THE COUNTY OF STOCKDALE ARE NOT RESPONSIBLE FOR THE CONSEQUENCES OF ANY UNLAWFUL OMISSIONS.

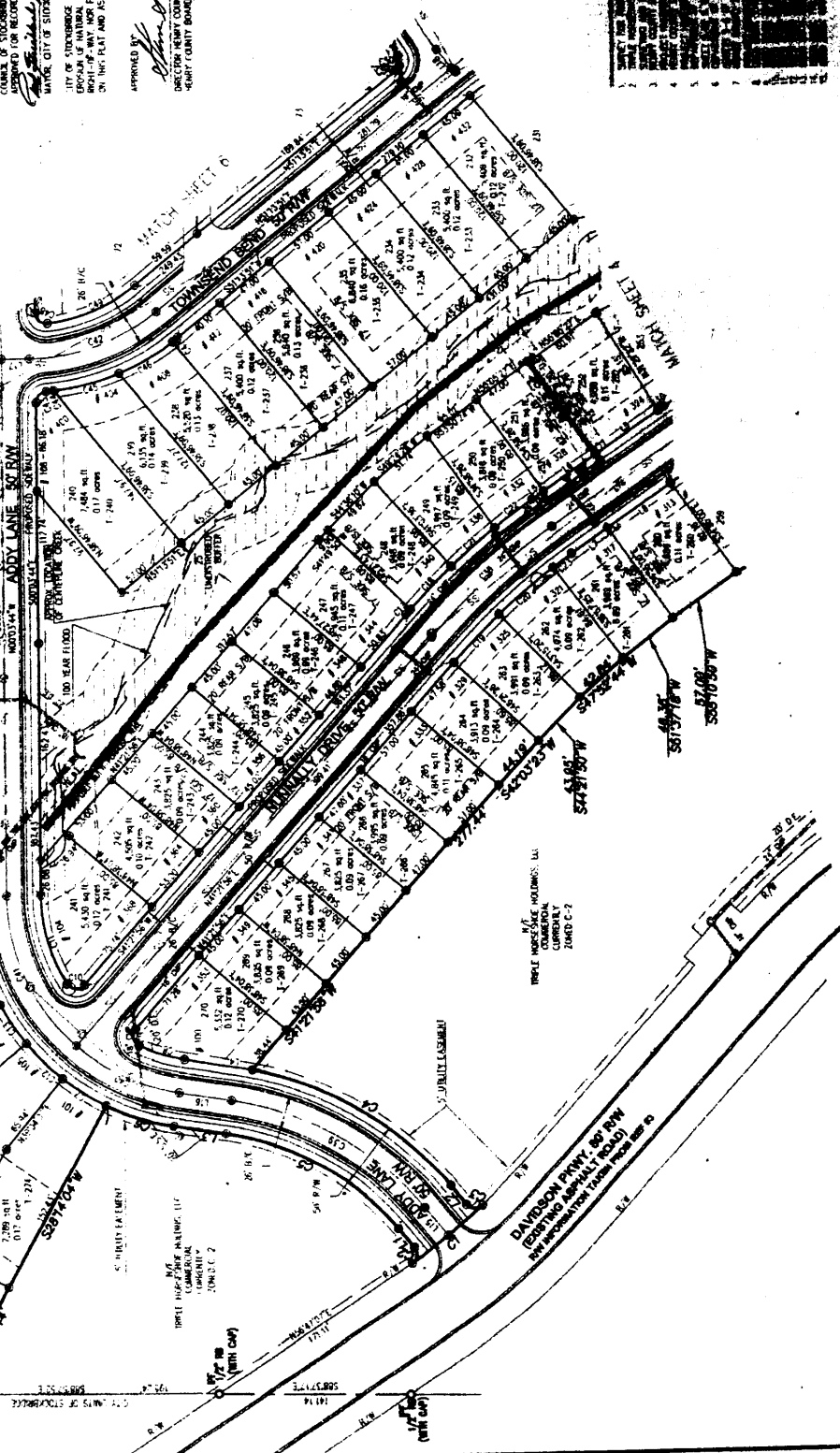
8. THE CITY OF STOCKDALE AND THE COUNTY OF STOCKDALE ARE NOT RESPONSIBLE FOR THE CONSEQUENCES OF ANY UNLAWFUL ACTS OR OMISSIONS.

<p><b>Pass</b></p> <p>COMPTON</p>	
<p>DATE</p> <p>FILE #</p> <p>CONTRACT #</p> <p>DRAWN BY</p> <p>CHECKED BY</p>	<p>REVISIONS</p> <p>1. 12/20/64 Approved County Council</p> <p>2. 10/19/64 Licensed with submittal</p>
<p>PROJECT</p> <p>Northridge Country Phase 1-B</p> <p>CLAYTONVILLE</p> <p>City Development, Inc.</p> <p>21500 Highway 99</p> <p>Stockdale, CA 95211</p>	<p>SHEET TITLE</p> <p>Final Subdivision Plat</p> <p>City of Stockdale</p> <p>Lead Lot of 160 - 10000000000</p> <p>Heavy County, Georgia</p>
<p><b>MB</b></p>	

PROPOSED M.D. EROSION PLAN

APPROX. LOCATION OF CENTERLINE CREEK

SECTION	AREA (SQ. FT.)	PERCENTAGE	AREA (SQ. FT.)	PERCENTAGE
1	4500	1.5	4500	1.5
2	4500	1.5	4500	1.5
3	4500	1.5	4500	1.5
4	4500	1.5	4500	1.5
5	4500	1.5	4500	1.5
6	4500	1.5	4500	1.5
7	4500	1.5	4500	1.5
8	4500	1.5	4500	1.5
9	4500	1.5	4500	1.5
10	4500	1.5	4500	1.5
11	4500	1.5	4500	1.5
12	4500	1.5	4500	1.5
13	4500	1.5	4500	1.5
14	4500	1.5	4500	1.5
15	4500	1.5	4500	1.5
16	4500	1.5	4500	1.5
17	4500	1.5	4500	1.5
18	4500	1.5	4500	1.5
19	4500	1.5	4500	1.5
20	4500	1.5	4500	1.5
21	4500	1.5	4500	1.5
22	4500	1.5	4500	1.5
23	4500	1.5	4500	1.5
24	4500	1.5	4500	1.5
25	4500	1.5	4500	1.5
26	4500	1.5	4500	1.5
27	4500	1.5	4500	1.5
28	4500	1.5	4500	1.5
29	4500	1.5	4500	1.5
30	4500	1.5	4500	1.5
31	4500	1.5	4500	1.5
32	4500	1.5	4500	1.5
33	4500	1.5	4500	1.5
34	4500	1.5	4500	1.5
35	4500	1.5	4500	1.5
36	4500	1.5	4500	1.5
37	4500	1.5	4500	1.5
38	4500	1.5	4500	1.5
39	4500	1.5	4500	1.5
40	4500	1.5	4500	1.5
41	4500	1.5	4500	1.5
42	4500	1.5	4500	1.5
43	4500	1.5	4500	1.5
44	4500	1.5	4500	1.5
45	4500	1.5	4500	1.5
46	4500	1.5	4500	1.5
47	4500	1.5	4500	1.5
48	4500	1.5	4500	1.5
49	4500	1.5	4500	1.5
50	4500	1.5	4500	1.5



15467 15468 15469 15470 15471 15472 15473 15474 15475 15476 15477 15478 15479 15480 15481 15482 15483 15484 15485 15486 15487 15488 15489 15490 15491 15492 15493 15494 15495 15496 15497 15498 15499 15500

