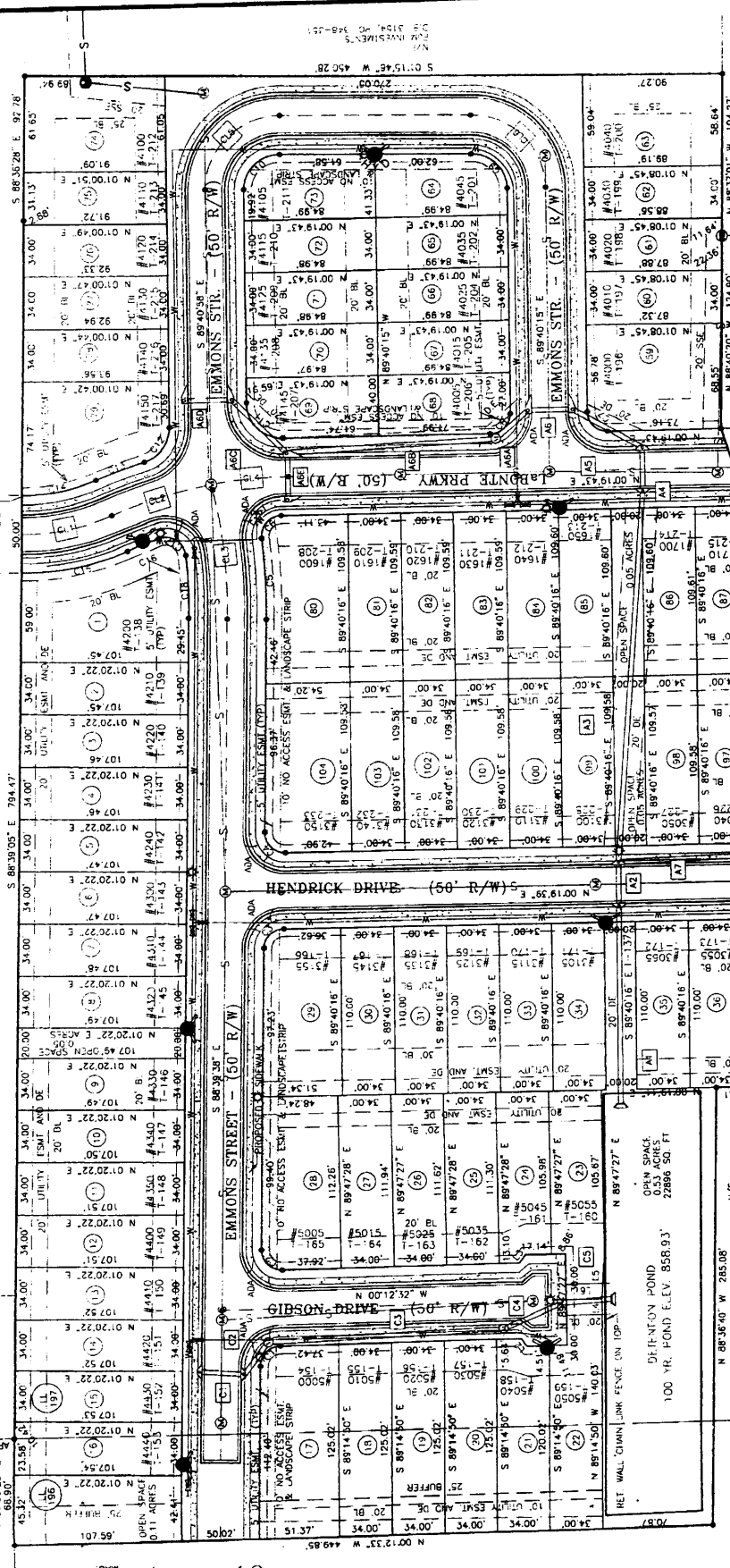




GREEN VALLEY PHASE 2

OWNFR/DEVELOPER
 PROPERTY DEPT
 45 PARKLAND DRIVE
 STOCKBRIDGE, GA 30281
 PHONE (770) 507-0013
 DATE 02/28/06 SCALE 1" = 40'
 SHEET 2 OF 3
 AUTOCAD/2002/16/02/22/06

LOCATED IN
 CITY OF McDONOUGH
 LAND LOT 196 & 197 7th DISTRICT
 HENRY COUNTY, GEORGIA
 DATE 02/28/06 SCALE 1" = 40'
 SHEET 2 OF 3



CURVE TABLE CHART
 CHORD BEARING
 CHORD LENGTH
 CURVE RADIUS
 CURVE LENGTH
 CURVE AREA

| CURVE | RADIUS | CHORD BEARING | CHORD LENGTH | CURVE LENGTH | CURVE AREA |
|-------|--------|---------------|--------------|--------------|------------|
| C1 | 12.33 | N 01°00'00" E | 12.33 | 12.33 | 0.00 |
| C2 | 12.33 | S 01°00'00" E | 12.33 | 12.33 | 0.00 |
| C3 | 12.33 | N 01°00'00" E | 12.33 | 12.33 | 0.00 |
| C4 | 12.33 | S 01°00'00" E | 12.33 | 12.33 | 0.00 |
| C5 | 12.33 | N 01°00'00" E | 12.33 | 12.33 | 0.00 |
| C6 | 12.33 | S 01°00'00" E | 12.33 | 12.33 | 0.00 |
| C7 | 12.33 | N 01°00'00" E | 12.33 | 12.33 | 0.00 |
| C8 | 12.33 | S 01°00'00" E | 12.33 | 12.33 | 0.00 |
| C9 | 12.33 | N 01°00'00" E | 12.33 | 12.33 | 0.00 |
| C10 | 12.33 | S 01°00'00" E | 12.33 | 12.33 | 0.00 |
| C11 | 12.33 | N 01°00'00" E | 12.33 | 12.33 | 0.00 |
| C12 | 12.33 | S 01°00'00" E | 12.33 | 12.33 | 0.00 |
| C13 | 12.33 | N 01°00'00" E | 12.33 | 12.33 | 0.00 |
| C14 | 12.33 | S 01°00'00" E | 12.33 | 12.33 | 0.00 |
| C15 | 12.33 | N 01°00'00" E | 12.33 | 12.33 | 0.00 |
| C16 | 12.33 | S 01°00'00" E | 12.33 | 12.33 | 0.00 |
| C17 | 12.33 | N 01°00'00" E | 12.33 | 12.33 | 0.00 |
| C18 | 12.33 | S 01°00'00" E | 12.33 | 12.33 | 0.00 |
| C19 | 12.33 | N 01°00'00" E | 12.33 | 12.33 | 0.00 |
| C20 | 12.33 | S 01°00'00" E | 12.33 | 12.33 | 0.00 |

LOT AREA SUMMARY

| LOT | AREA | PERCENT |
|-----|------|---------|
| 1 | 1.17 | 0.01 |
| 2 | 1.17 | 0.01 |
| 3 | 1.17 | 0.01 |
| 4 | 1.17 | 0.01 |
| 5 | 1.17 | 0.01 |
| 6 | 1.17 | 0.01 |
| 7 | 1.17 | 0.01 |
| 8 | 1.17 | 0.01 |
| 9 | 1.17 | 0.01 |
| 10 | 1.17 | 0.01 |
| 11 | 1.17 | 0.01 |
| 12 | 1.17 | 0.01 |
| 13 | 1.17 | 0.01 |
| 14 | 1.17 | 0.01 |
| 15 | 1.17 | 0.01 |
| 16 | 1.17 | 0.01 |
| 17 | 1.17 | 0.01 |
| 18 | 1.17 | 0.01 |
| 19 | 1.17 | 0.01 |
| 20 | 1.17 | 0.01 |
| 21 | 1.17 | 0.01 |
| 22 | 1.17 | 0.01 |
| 23 | 1.17 | 0.01 |
| 24 | 1.17 | 0.01 |
| 25 | 1.17 | 0.01 |
| 26 | 1.17 | 0.01 |
| 27 | 1.17 | 0.01 |
| 28 | 1.17 | 0.01 |
| 29 | 1.17 | 0.01 |
| 30 | 1.17 | 0.01 |
| 31 | 1.17 | 0.01 |
| 32 | 1.17 | 0.01 |
| 33 | 1.17 | 0.01 |
| 34 | 1.17 | 0.01 |
| 35 | 1.17 | 0.01 |
| 36 | 1.17 | 0.01 |
| 37 | 1.17 | 0.01 |
| 38 | 1.17 | 0.01 |
| 39 | 1.17 | 0.01 |
| 40 | 1.17 | 0.01 |
| 41 | 1.17 | 0.01 |
| 42 | 1.17 | 0.01 |
| 43 | 1.17 | 0.01 |
| 44 | 1.17 | 0.01 |
| 45 | 1.17 | 0.01 |
| 46 | 1.17 | 0.01 |
| 47 | 1.17 | 0.01 |
| 48 | 1.17 | 0.01 |
| 49 | 1.17 | 0.01 |
| 50 | 1.17 | 0.01 |
| 51 | 1.17 | 0.01 |
| 52 | 1.17 | 0.01 |
| 53 | 1.17 | 0.01 |
| 54 | 1.17 | 0.01 |
| 55 | 1.17 | 0.01 |
| 56 | 1.17 | 0.01 |
| 57 | 1.17 | 0.01 |
| 58 | 1.17 | 0.01 |
| 59 | 1.17 | 0.01 |
| 60 | 1.17 | 0.01 |
| 61 | 1.17 | 0.01 |
| 62 | 1.17 | 0.01 |
| 63 | 1.17 | 0.01 |
| 64 | 1.17 | 0.01 |
| 65 | 1.17 | 0.01 |
| 66 | 1.17 | 0.01 |
| 67 | 1.17 | 0.01 |
| 68 | 1.17 | 0.01 |
| 69 | 1.17 | 0.01 |
| 70 | 1.17 | 0.01 |
| 71 | 1.17 | 0.01 |
| 72 | 1.17 | 0.01 |
| 73 | 1.17 | 0.01 |
| 74 | 1.17 | 0.01 |
| 75 | 1.17 | 0.01 |
| 76 | 1.17 | 0.01 |
| 77 | 1.17 | 0.01 |
| 78 | 1.17 | 0.01 |
| 79 | 1.17 | 0.01 |
| 80 | 1.17 | 0.01 |
| 81 | 1.17 | 0.01 |
| 82 | 1.17 | 0.01 |
| 83 | 1.17 | 0.01 |
| 84 | 1.17 | 0.01 |
| 85 | 1.17 | 0.01 |
| 86 | 1.17 | 0.01 |
| 87 | 1.17 | 0.01 |
| 88 | 1.17 | 0.01 |
| 89 | 1.17 | 0.01 |
| 90 | 1.17 | 0.01 |
| 91 | 1.17 | 0.01 |
| 92 | 1.17 | 0.01 |
| 93 | 1.17 | 0.01 |
| 94 | 1.17 | 0.01 |
| 95 | 1.17 | 0.01 |
| 96 | 1.17 | 0.01 |
| 97 | 1.17 | 0.01 |
| 98 | 1.17 | 0.01 |
| 99 | 1.17 | 0.01 |
| 100 | 1.17 | 0.01 |

CENTERLINE CURVE CHART

| CURVE | RADIUS | ARC LENGTH | CHORD LENGTH | CHORD BEARING |
|-------|--------|------------|--------------|---------------|
| CL1 | 138.31 | 59.28 | 58.83 | N 10°29'28" E |
| CL2 | 201.87 | 63.51 | 63.30 | S 16°26'42" E |
| CL3 | 307.23 | 64.51 | 64.24 | S 04°13'47" E |
| CL4 | 281.28 | 75.48 | 67.85 | S 43°35'02" E |
| CL5 | 483.01 | 75.40 | 67.88 | S 45°19'45" W |

LINE TABLE CHART

| LINE | BEARING | DISTANCE |
|------|---------------|----------|
| L1 | N 00°19'44" E | 6.74 |
| L2 | N 00°19'44" E | 6.74 |
| L3 | S 89°14'30" W | 6.78 |
| L4 | S 89°14'30" W | 30.00 |
| L5 | S 89°09'59" E | 30.07 |
| L6 | N 00°12'32" W | 23.01 |

LEGEND

- - SANITARY SEWER MANHOLE
- ⊗ - FIRE HYDRANT
- ⊕ - DOUBLE WING CATCH BASIN
- ⊖ - SINGLE WING CATCH BASIN
- ⊙ - WATER VALVE
- ⊚ - JUNCTION BOX
- ⊛ - HEADWALL
- ⊜ - STREET LIGHT

PROPERTY TAX MAP

HENRY COUNTY
 TAX MAP
 8/2004
 TAX PARCELS
 OPEN SPACE T-137

PROPERTY TAX MAP

HENRY COUNTY
 TAX MAP
 8/2004
 TAX PARCELS
 OPEN SPACE T-137

SIBLEY SURVEYING, INC.
 310 PACEBROOK ROAD
 MCDONOUGH, GA 30252
 PH (770) 320-7455
 FAX (770) 320-7145
 AIA REGISTERED PROFESSIONAL ENGINEER

