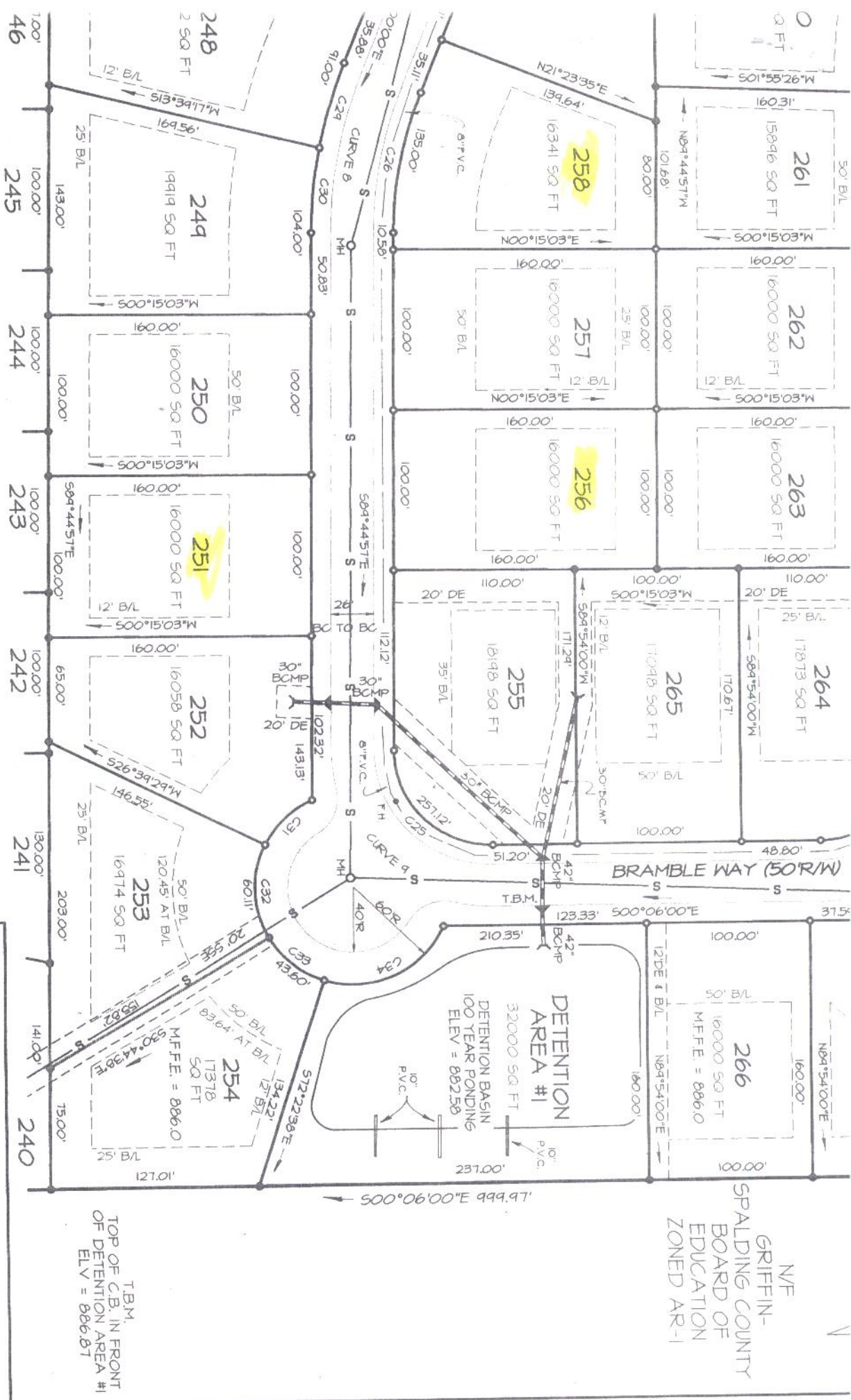




11/10/2024 10:45 AM

Morgan T. Roopman, Clerk



FOR RIGHT OF WAY CURVE INFORMATION, SEE CHART ON PAGE 1 OF 4.



DATE	REVISION

FINAL PLAT  
OF  
**STONEBRIAR ~ PHASE ONE**

LAND LOT 88 2ND DISTRICT SPALDING COUNTY, GEORGIA

JOB NO. 00021 DRAIN BY: DSB/MSH DATE: 03/27/02 PAGE 3 OF 4

6-4-02 10:45 AM 24/185

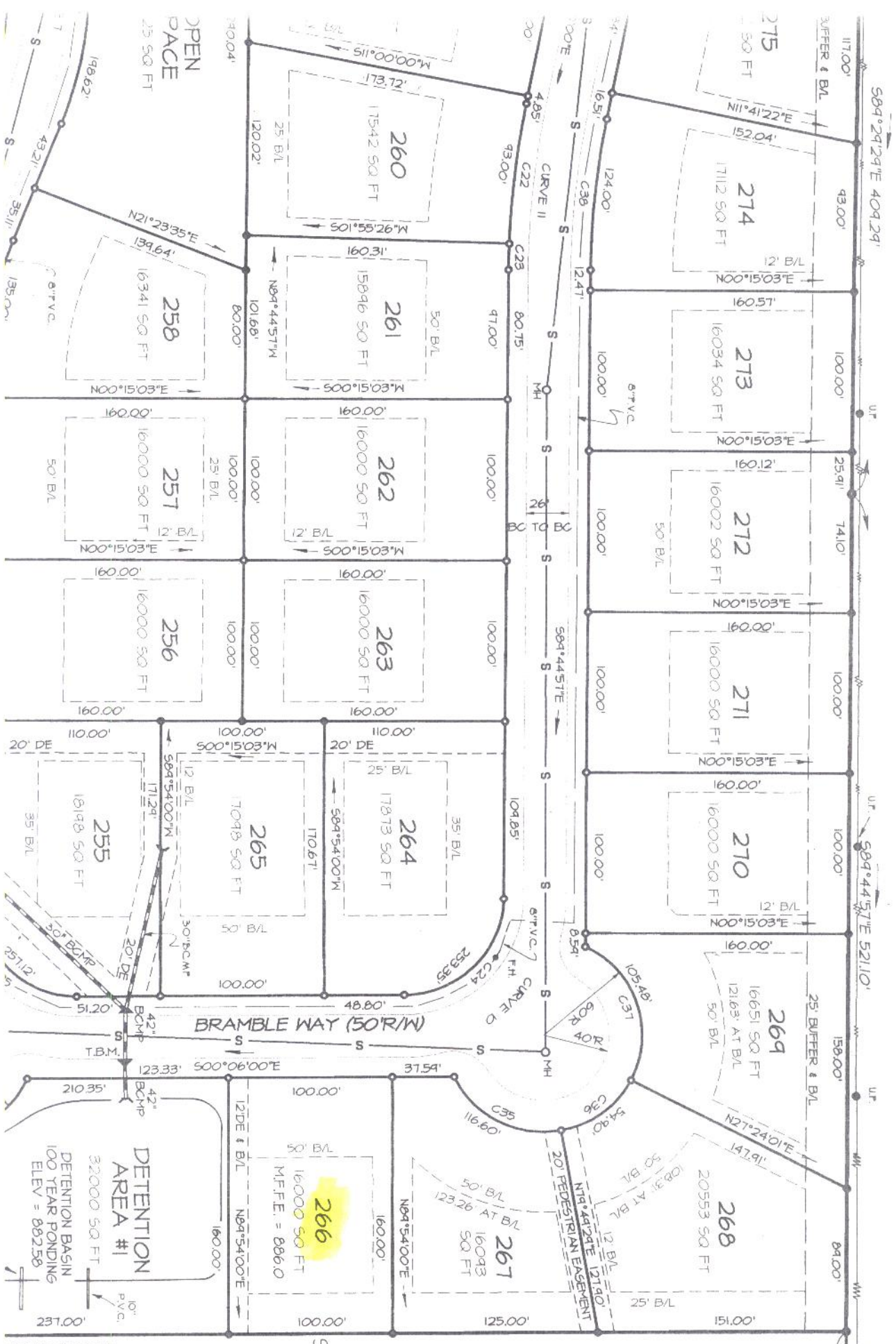
N/E  
GRIFFIN-  
SPALDING COUNTY  
BOARD OF  
EDUCATION  
ZONED AR-1

T.B.M.  
TOP OF C.B. IN FRONT  
OF DETENTION AREA #1  
ELV = 886.87

DETENTION  
AREA #1  
DETENTION BASIN  
100 YEAR PONDING  
ELEV = 882.58

Map of Spalding County (pp. 3-4)

MORELAND ROAD (100R/W)



N/E  
GRIFFIN-  
SPALDING COUNTY  
BOARD OF  
EDUCATION  
ZONED AR-1



FROM A PLAT BY  
G. TIM CONGLE  
DATED 5/17/78

1.00" E 999.97'