

PHASE 3B
DB 290 PG 3

Now or Formerly
Barry Lee
DB.8671 Pg.130

L.L. 100
IAFF DISTRICT

Now or Formerly
David T. & Evelyn
Mitchell
DB.8022 Pg.442

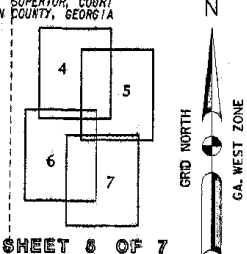
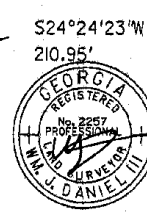
Now or Formerly
Patricia Head
DB.3457 Pg.120

Now or Formerly
Patricia Head

ARC 340.27'
RAD 3045.00'
S28°09'17\"/>

CERTIFICATION AS TO RECORDING
THIS IS TO CERTIFY THAT THIS PLAT HAS BEEN
RECORDED IN PLAT BOOK
PAGE _____ OF FULTON COUNTY
RECORDED ON _____ 20____

CLERK, SUPERIOR COURT
FULTON COUNTY, GEORGIA



DESIGNED	DATE
DRAWN	DATE
CHECKED	DATE
APPROVED	DATE

LOWE ENGINEERS

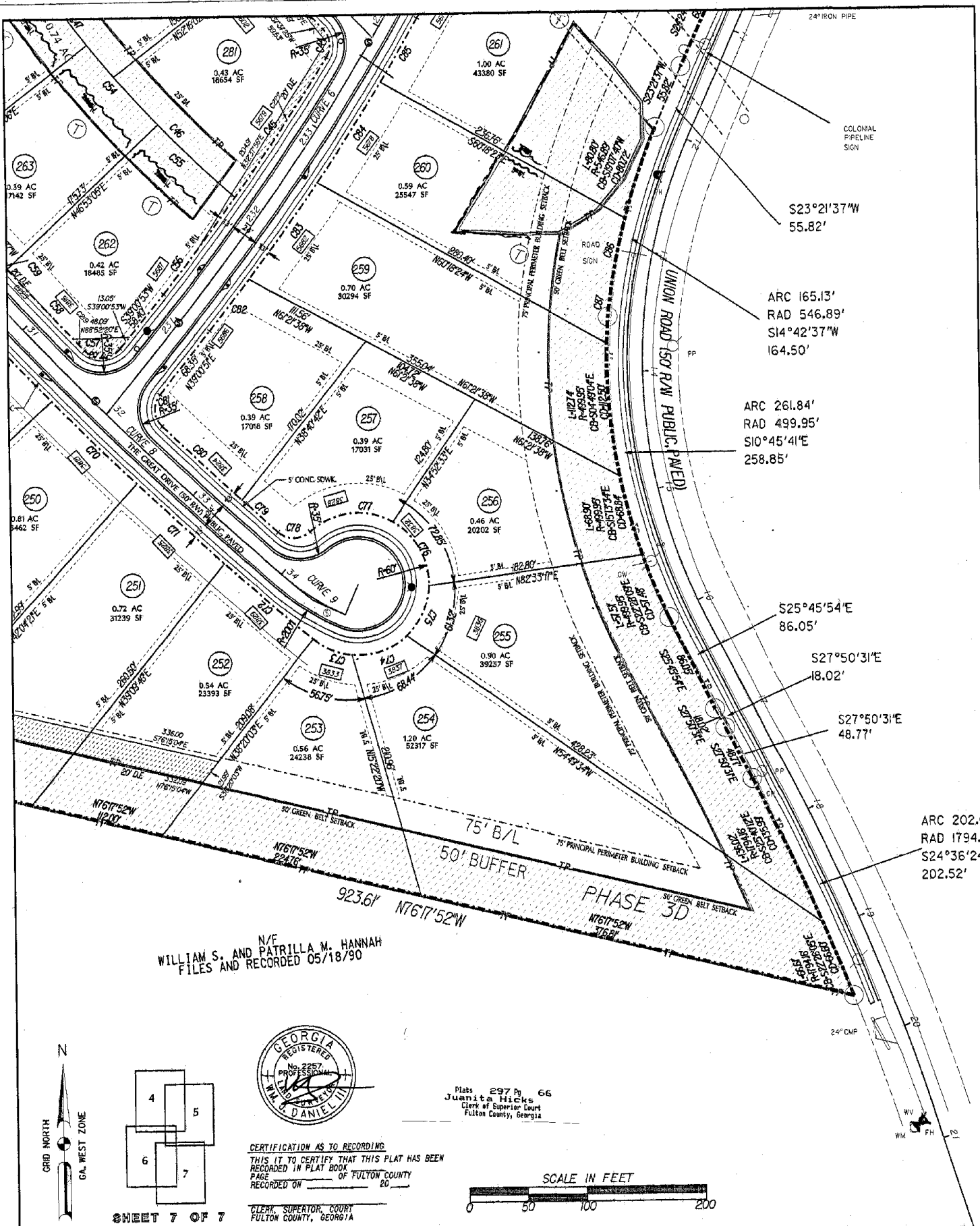
2000 SURVEYING PARTY
ATLANTA, GA 30309
PHONE 404-525-4000
FAX 404-525-4000

NLC DEVELOPERS, INC.

**FINAL PLAT - PHASE 3D
UNION CROSSING**

PROJ. NO. 32200
DATE 04-10-08
SCALE 1\"/>

LAND LOTS 20.74
FULTON COUNTY
SFF.14 FF DISTRICT
GEORGIA
DWG. NO. 18



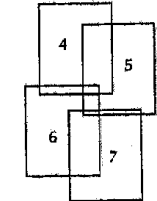
N/E
WILLIAM S. AND PATRILLA M. HANNAH
FILES AND RECORDED 05/18/90



CERTIFICATION AS TO RECORDING
THIS IS TO CERTIFY THAT THIS PLAT HAS BEEN
RECORDED IN PLAT BOOK _____
PAGE _____ OF FULTON COUNTY
RECORDED ON _____ 20____

CLERK, SUPERIOR COURT
FULTON COUNTY, GEORGIA

Plats 297 Pg 66
Julia Hicks
Clerk of Superior Court
Fulton County, Georgia



SHEET 7 OF 7



LOWE
ENGINEERS

2000 BRIDGEVIEW DRIVE
SUITE 400
ATLANTA, GEORGIA 30328
TEL: 770-450-4600
FAX: 770-911-9400

NLC DEVELOPERS, INC.

**FINAL PLAT - PHASE 3D
UNION CROSSING**

LAND LOTS 100/14
FULTON COUNTY

97.14 FF DISTRICT
GEORGIA

PROJ. NO. 1378.00
DATE: 04/14/08
SCALE: 1" = 50'
DWG. NO. 1