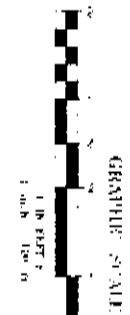
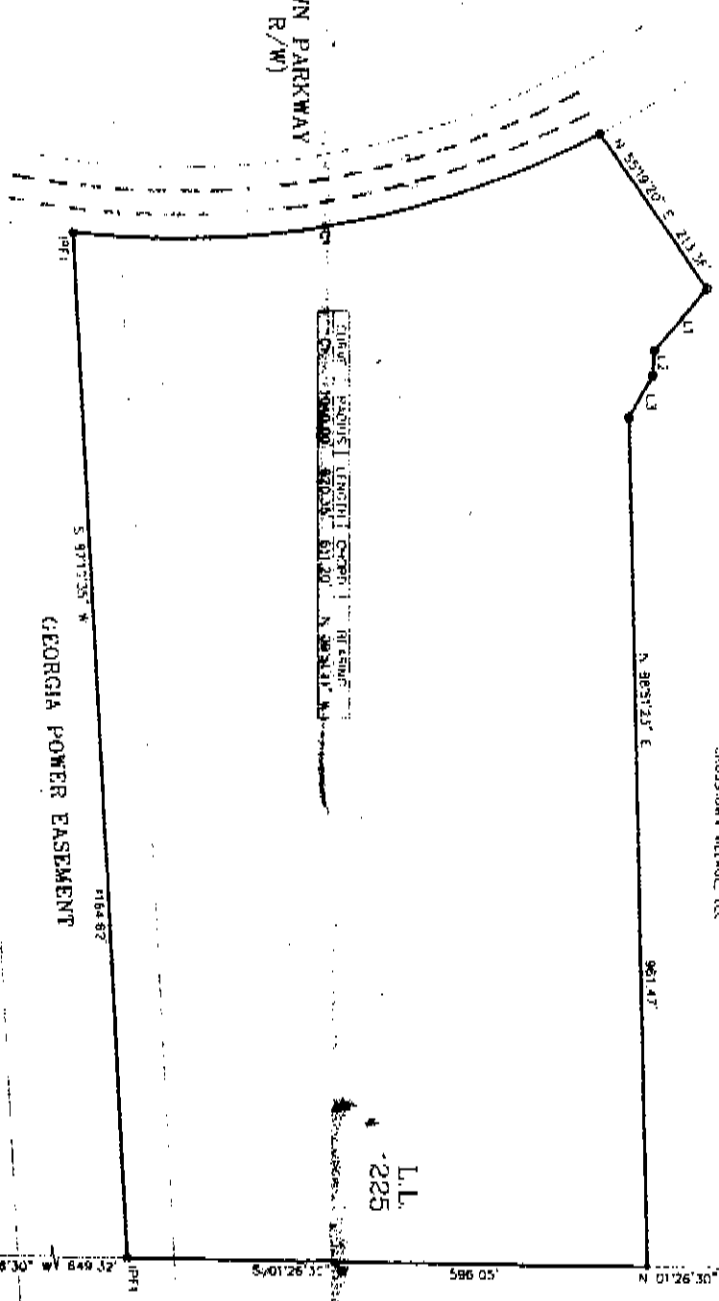


SURVEY FOR
DESTINY VENTURES, INC.
 LAND LOT 225, 7TH DISTRICT
 CITY OF BREKIN
 HARALSON COUNTY, GEORGIA
 DECEMBER 27, 2005
 AREA = 17.09 ACRES

CROSTOWN PARKWAY
 (80' R/W)



LINE	SECTION	DISTANCE
1	5	22.47
2	2	28.16
3	2	23.19

NAME OF FORMERLY
 CROSS TOWN ALLIANCE LLC

TO THE NORTH EAST CORNER
 OF LAND LOT 225

NAME OF FORMERLY
 DESTINY VENTURES, INC

TO THE SOUTH EAST CORNER
 OF LAND LOT 225

GEORGIA POWER EASEMENT

L.L. 225

L.L. 224

LEGEND

○ #4'S	IRON PIN SET
● #1/2"	IRON PIN FOUND
—	METAL FENCE POST
—	CENTERLINE
—	BACK OF CURB
—	EDGE OF PAVEMENT
—	LAND LOT CORNER
—	RIGHT OF WAY
—	WIRE FENCE
—	POWER LINE
—	CREEK ABANDONED
—	CALCULATED POINT (80' MONUMENT)
—	UTILITY POLE

NOTE: ALL IRON PINS SET ARE 1/2" Ø 88BAR, UNLESS OTHERWISE SHOWN.
 NOTE: ALL I/P#1 ARE 1/2" REBAR.
 NOTE: THIS PROPERTY IS SUBJECT TO ALL EASEMENTS AND/OR RIGHTS OF WAY WHICH MAY AFFECT TITLE

GEORGIA HARALSON COUNTY
 I hereby certify that the above
 is a true and correct copy of the
 original record in my office.
 W. J. [Signature]
 Surveyor

THIS SURVEY WAS MADE USING A TOPCON GTS-301 EDM. THE CORNER
 POINT BEARS DISTANCE TO THE NEAREST ONE FOOT, AND WITH
 CORRECT READING TO 5 SECONDS FOR ANGULAR MEASUREMENTS.
 THE FIELD DATA UPON WHICH THIS PLAT IS BASED HAS A CLOSURE
 ERROR OF ONE FOOT IN 15,000 FEET AND AN ANGULAR ERROR
 OF 3 SECONDS PER ANGULAR POINT, AND WAS ADJUSTED USING THE
 LEAST SQUARE RULE.
 THE ACCURACY ON THIS PLAT HAS A CLOSURE PRECISION OF ONE
 FOOT IN 800,000 FEET

3/4" X 1" NEW CERTIFICATE
 THIS PLAT IS TRUE AND
 CORRECT AND WAS PREPARED FROM AN ACTUAL SURVEY
 OF THE PROPERTY MADE BY ME OR UNDER MY SUPERVISION.

BY: [Signature]
 W. J. HARALSON, CLS, R.L.S. No. 1134



PREPARED BY
PIONEER LAND SURVEYING CO.
 901-U SOUTH PARK STREET
 CARROLLTON, GEORGIA
 (770) 836-1819