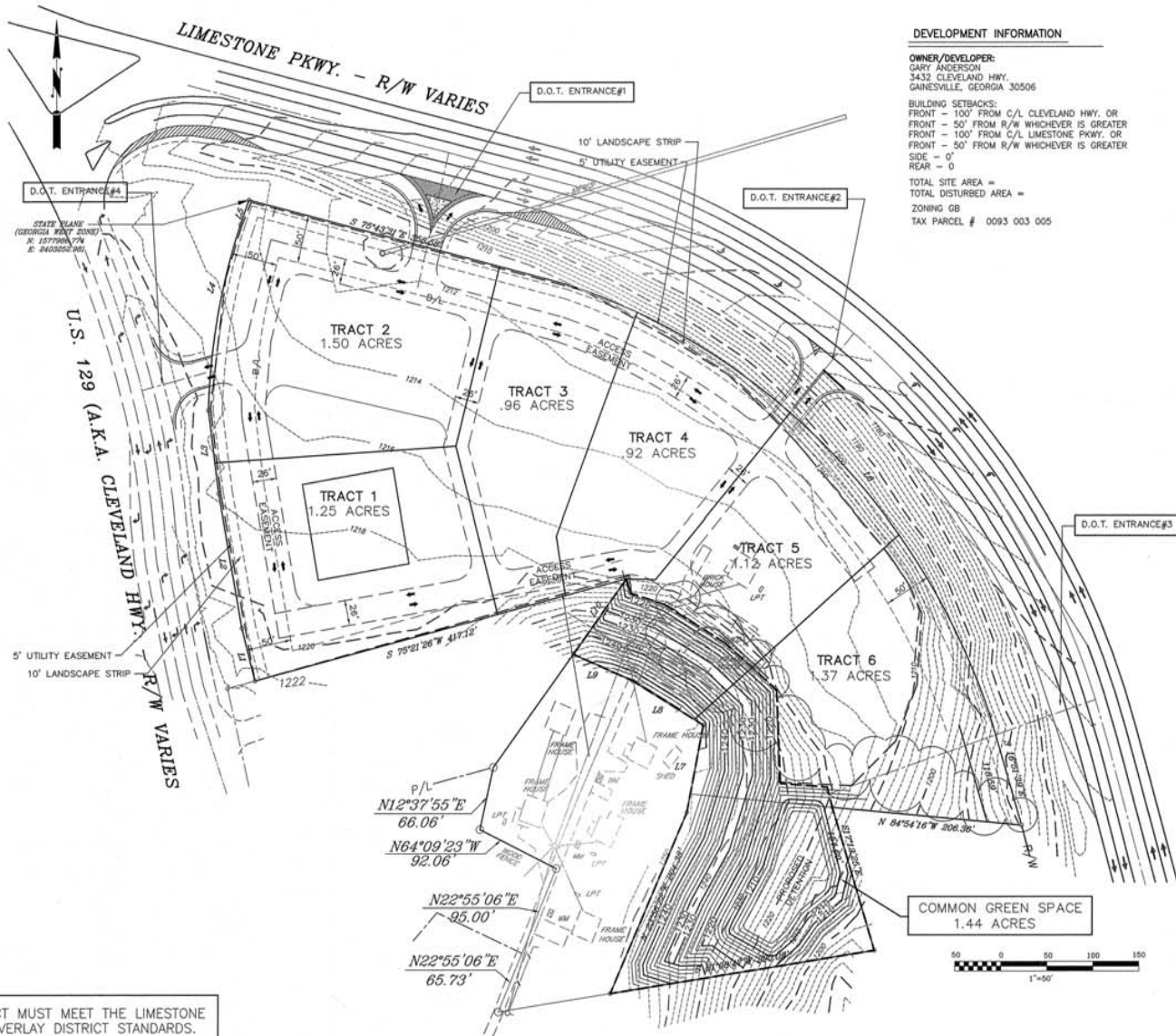


# 129 and Limestone Parkway – Conceptual Plan



**DEVELOPMENT INFORMATION**

**OWNER/DEVELOPER:**  
 GARY ANDERSON  
 3432 CLEVELAND HWY.  
 GAINESVILLE, GEORGIA 30506

**BUILDING SETBACKS:**  
 FRONT - 100' FROM C/L CLEVELAND HWY. OR  
 FRONT - 50' FROM R/W WHICHEVER IS GREATER  
 FRONT - 100' FROM C/L LIMESTONE PKWY. OR  
 FRONT - 50' FROM R/W WHICHEVER IS GREATER  
 SIDE - 0'  
 REAR - 0'

TOTAL SITE AREA =  
 TOTAL DISTURBED AREA =  
 ZONING GB  
 TAX PARCEL # 0093 003 005

NOTE: THIS PROJECT MUST MEET THE LIMESTONE CORRIDOR OVERLAY DISTRICT STANDARDS.