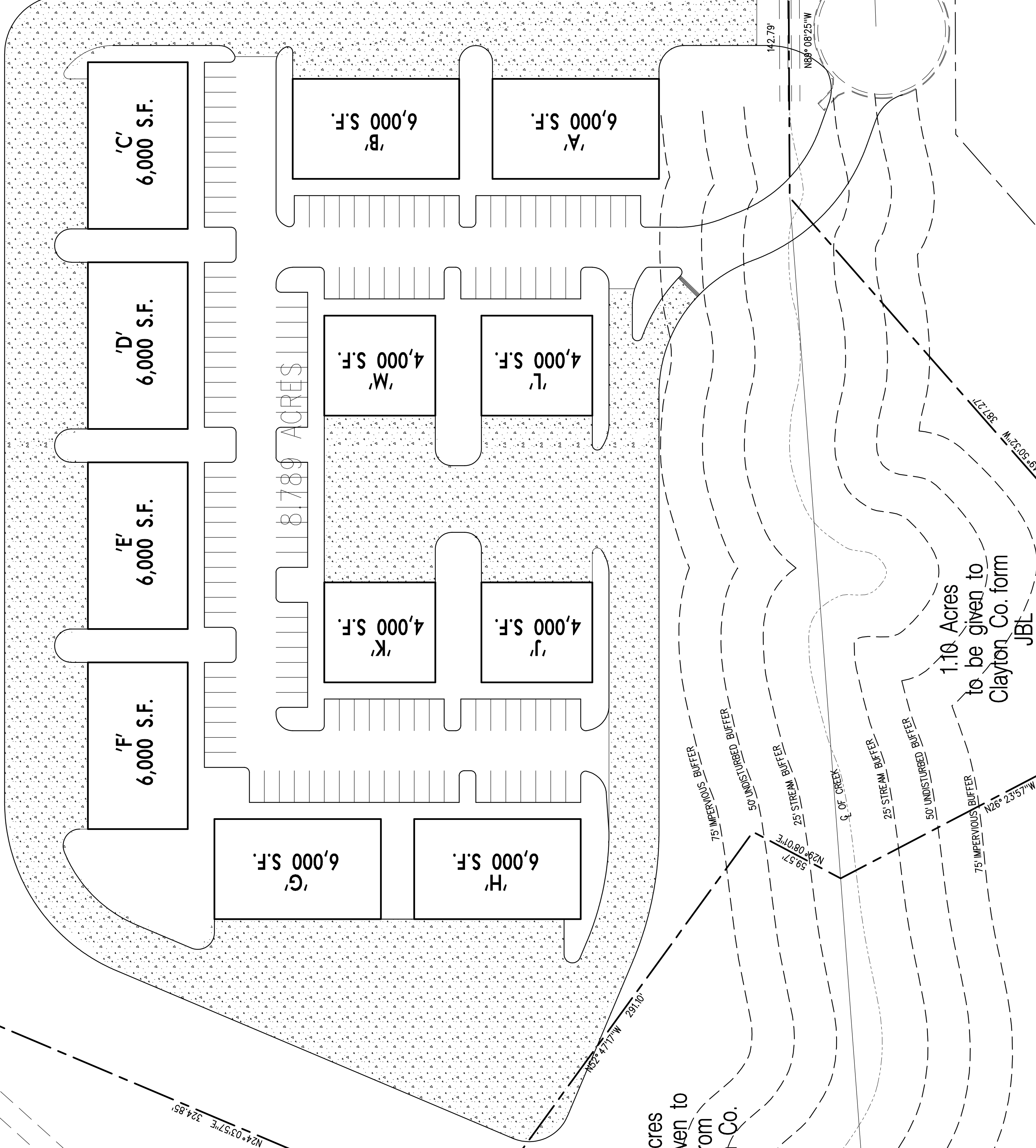


N/F
NORTHEAST REAL PROPERTY HOLDING OF ATLANTA, L.L.C.
DB 5263 / PG 001

588°49'50"E 630.42'
LAND LOT 145
LAND LOT 176

N/F
CLAYTON COUNTY, GEORGIA
DB 4922 / PG 95



N/F
SOUTHERN BONDED WAREHOUSE COMPANY
DB 2016 / PG 408

SOUTHERN ROAD
(60' R.O.W.)

APPROXIMATE LOCATION 100-YEAR
FLOODPLAIN, ZONE 'AE', PER FIRM PANEL
13063C0078C, DATED SEPTEMBER 5, 2007.

N/F
CLAYTON COUNTY, GEORGIA
DB 4922 / PG 95

1.05 Acres
to be given to
JBL from
Clayton Co.

1.10 Acres
to be given to
Clayton Co. from
JBL

N/F
CLAYTON COUNTY, GEORGIA
DB 4922 / PG 95

N/F
CLAYTON COUNTY, GEORGIA
DB 4922 / PG 95