

N/F  
NORTHEAST REAL PROPERTY HOLDING OF ATLANTA, L.L.C.  
DB 5263 / PG 001

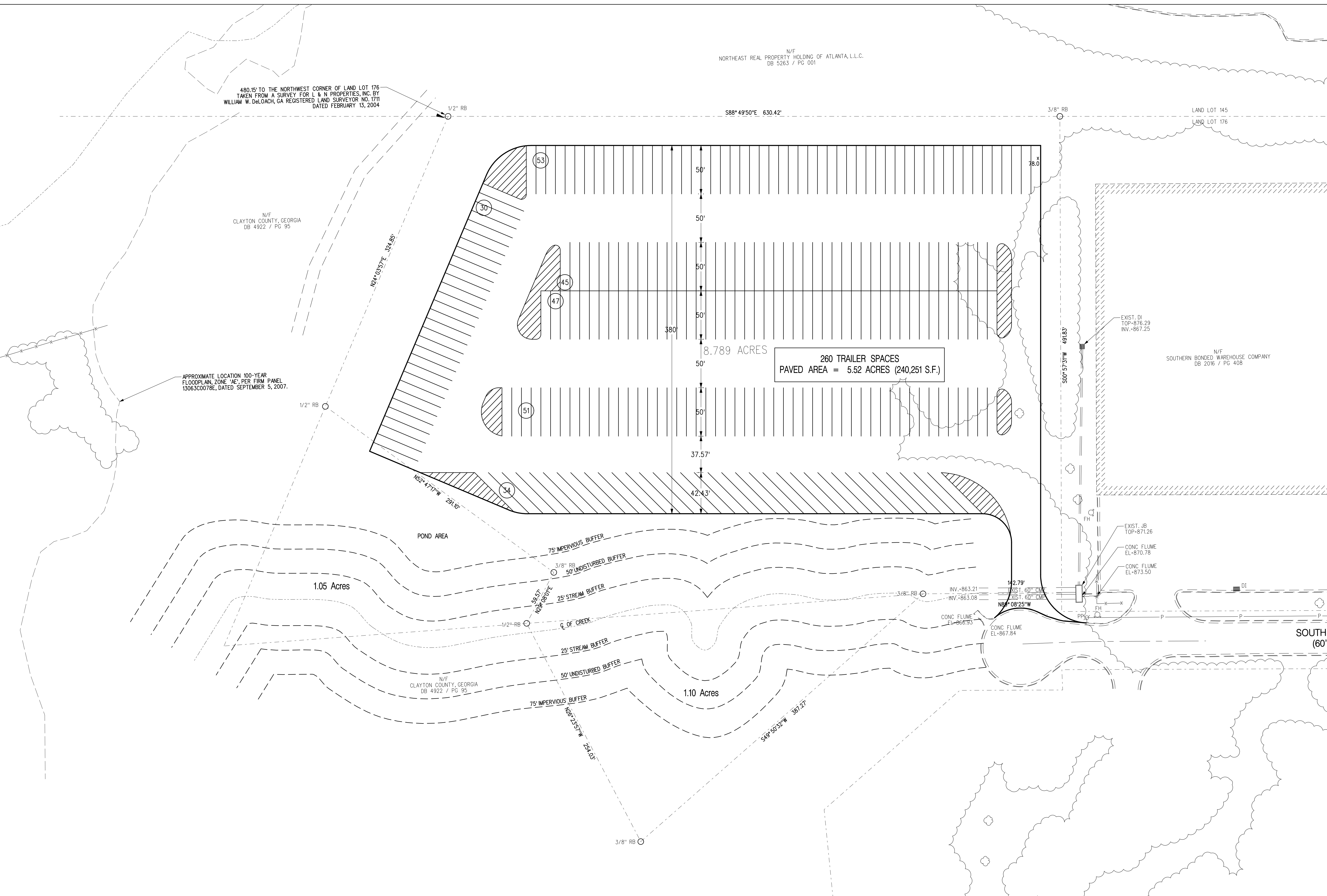
480.15' TO THE NORTHWEST CORNER OF LAND LOT 176  
TAKEN FROM A SURVEY FOR L & N PROPERTIES, INC. BY  
WILLIAM W. DeLOACH, GA REGISTERED LAND SURVEYOR NO. 1711  
DATED FEBRUARY 13, 2004

N/F  
CLAYTON COUNTY, GEORGIA  
DB 4922 / PG 95

APPROXIMATE LOCATION 100-YEAR  
FLOODPLAIN, ZONE 'AE', PER FIRM PANEL  
13063C0078E, DATED SEPTEMBER 5, 2007.

LAND LOT 145  
LAND LOT 176

N/F  
SOUTHERN BONDED WAREHOUSE COMPANY  
DB 2016 / PG 408



260 TRAILER SPACES  
PAVED AREA = 5.52 ACRES (240,251 S.F.)

8.789 ACRES

POND AREA

1.05 Acres

1.10 Acres

SOUTHE  
(60')