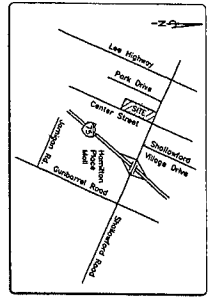


SEE SHEET 101-1-2

- LEGEND FOR CONDOMINIUMS**
- PRIVATE OWNERSHIP
 - ▨ GENERAL COMMON ELEMENTS
 - ▩ LIMITED COMMON ELEMENTS

I, hereby certify, after investigation of the current F.G.A. - Flood Insurance Rate Map (FIRM) and FEMA 100 year flood zone map, that the 100 year flood hazard zone shown on the reference map is dated November 7, 2002.

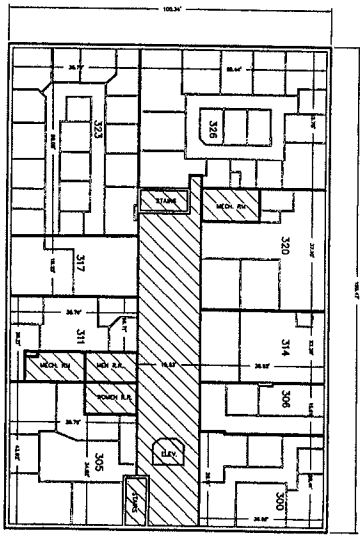
- NOTES:**
- 1) Present zoning classification C-2 & M-3.
 - 2) Area associated with this plat is 6,833 sq. ft.
 - 3) This plat is subject to the provisions of the Condominium Act of the State of Tennessee.
 - 4) The plat indicates the property described in Deed Book 2697, Page 216.
 - 5) The plat indicates the property described in Deed Book 2697, Page 216.
 - 6) The plat indicates the property described in Deed Book 2697, Page 216.
 - 7) Local Government does not certify their utility or utility connections are available.
 - 8) Public Utility services are provided by private utility companies.
 - 9) Public Utility services are provided by private utility companies.
 - 10) The plat indicates the property described in Deed Book 2697, Page 216.
 - 11) The dimensions of the units shown herein have been measured using unfinished interior surface perimeter walls.
 - 12) Load bearing walls within private ownership are General Common Elements although not shown on each.
 - 13) All horizontal and vertical angles shown herein, are right angles (90 degrees) unless shown to the contrary.



APPROVED FOR RECORDING
 DATE: 11/10/07
 BY: [Signature]
 CHATTAHOON COUNTY REGIONAL PLANNING COMMISSION
 BY: [Signature]

1st Payment: 300707082975
 Book and Page of Plat: 15
 Date of Recording: 11/10/07
 Office: 11:05 AM
 Fee: \$11.00
 Hamilton County, Tennessee

GENERAL CONTRACTOR OF RECORD FOR CONSTRUCTION
 [Signature]
 [Name]
 [Address]
 [City, State, Zip]



THIRD FLOOR

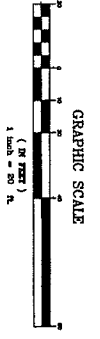
THIRD FLOOR ELEV. 124.8
SECOND FLOOR ELEV. 123.8
FIRST FLOOR ELEV. 122.8
BASEMENT ELEV. 121.8

ELEVATION DETAIL
 N.T.S.

CALL BEFORE YOU DIG
 UTILITIES PROTECTION CENTER
 TENNESSEE
 1-800-351-1111

THREE WORKING DAYS BEFORE YOU DIG
 IF YOU ARE A HOMEOWNER, YOU MUST CALL BEFORE YOU DIG TO AVOID DAMAGE TO UTILITIES. IF YOU ARE A BUSINESS, YOU MUST CALL BEFORE YOU DIG TO AVOID DAMAGE TO UTILITIES. IF YOU ARE A CONTRACTOR, YOU MUST CALL BEFORE YOU DIG TO AVOID DAMAGE TO UTILITIES.

Drawing No. 2007-201-2
 Sheet No. 1 of 2
 Drawn By: AJ



GRAPHIC SCALE
 1" = 20' 0"

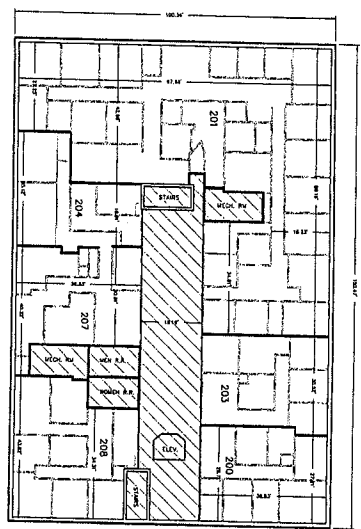
REVISED PLAT
VICTORIAN GARDENS CONDOMINIUMS
THIRD FLOOR
 AS SHOWN ON PLAT BOOK 81, PAGE 88,
 R.O.H.C., CITY OF CHATTANOOGA,
 HAMILTON COUNTY, TENNESSEE
 SCALE 1" = 20'
 JUNE 25, 2007

HOPKINS SURVEYING GROUP
 David L. Hopkins, Jr., Registered Land Surveyor No. 120
 P.O. Box 4386 Chattanooga, Tennessee 37405
 (423) 267-3751 Office / (423) 267-0811 Facsimile
 Copyright - By Hopkins Surveying Group, Inc.

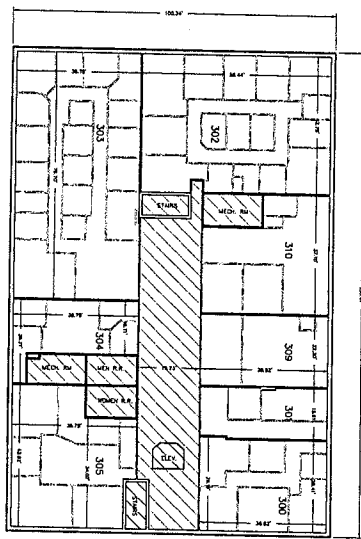


425' X 100' 100' 100' 200'

LEGEND FOR CONDOMINIUMS
 [Symbol] PRIVATE OWNERSHIP
 [Symbol] GENERAL COMMON ELEMENTS
 [Symbol] LIMITED COMMON ELEMENTS

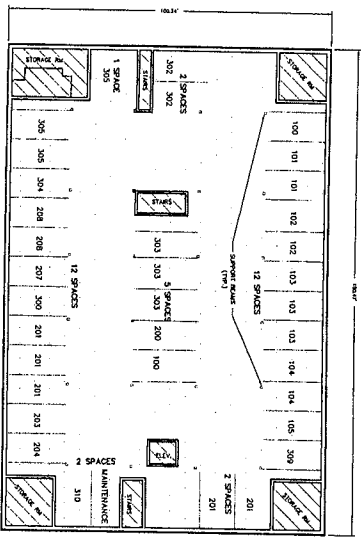


SECOND FLOOR



THIRD FLOOR

APPROVED FOR RECORDING
 HAMILTON COUNTY GIS DEPT.
 DATE 7/22/06
 BY [Signature]
 DATE 7/22/06
 ALTERNATE
 DATE 7/22/06
 BY [Signature]
 DATE 7/22/06
 CHAIRMAN
 DATE 7/22/06
 BY [Signature]



BASEMENT

THIRD FLOOR ELEV. 214.50	
SECOND FLOOR ELEV. 213.50	
FIRST FLOOR ELEV. 212.50	
BASEMENT ELEV. 211.50	
ELEVATION DETAIL N.T.S.	

REVISED PLAT

VICTORIAN GARDENS CONDOMINIUMS
BOUNDARY SURVEY
 LOTS 1A AND 2B, BLOCK A, ED ROBINSON TRACT, REVISED
 PLAT BOOK 37, PAGE 194, AND AS DESCRIBED IN DEED BOOK
 697, PAGE 218 R.O.M.C., CITY OF CHATTANOOGA,
 HAMILTON COUNTY, TENNESSEE

SCALE 1" = 20'
 JULY 18, 2006
 REVISION

I, David L. Hopkins, Jr., Registered Land Surveyor No. 120
 certify that I have surveyed the property herein, that the survey is correct to the
 best of my knowledge and belief, and that the area of possession of the subdivided
 survey is 5,110,000 (Category 1)

HOPKINS SURVEYING GROUP

David L. Hopkins, Jr. - Registered Land Surveyor No. 120
 175 Hamm Road
 P.O. Box 4366 Chattanooga, Tennessee 37405
 (423) 267-3751 Office / (423) 267-0611 Facsimile
 Copyright - By Hopkins Surveying Group, Inc.

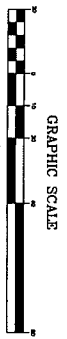


CALL BEFORE YOU DIG
 UTILITIES PROTECTION CENTER
 TENNESSEE
 1-800-351-1111



IF YOU ARE CONSIDERING ANY PROJECT TO DIG, CALL THE UTILITIES PROTECTION CENTER TO OBTAIN THE LOCATION OF UTILITIES KNOWN ON THE PLAT AND TO OBTAIN INFORMATION ON THE LOCATION OF ALL UNDISCOVERED UTILITIES IN THE AREA.

Drawing No. 2006-108-3
 Sheet No. 2 of 2
 Drawn By: NJ



GRAPHIC SCALE
 (IN FEET)
 1 Inch = 20 Ft.