

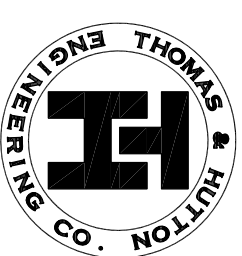
CAPACITY STUDY QUACCO ROAD PARCEL CONCEPT 'C'

CHATHAM COUNTY, GEORGIA

PREPARED FOR

ROY
PATEL

PREPARED BY



50 PARK OF COMMERCE WAY
POST OFFICE BOX 2727
SAVANNAH, GA. 31402-2727 (912)234-5300
CHARLESTON, SC - MYRTLE BEACH, SC

DRAWN BY:
R.P. THOMPSON

PROJECT NO.
18526

DATE:
APRIL 19, 2006

± 1.7 AC. STORM WATER
DETENTION /
FLOOD ZONE
MITIGATION AREA

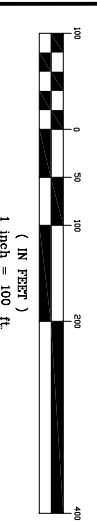
APARTMENT PARCEL #1 INFORMATION	
GROSS ACREAGE	49.53 AC.
UPLAND ACREAGE	19.45 AC.
UNIT COUNT	228 D.U.
UPLAND DENSITY	11.72 D.U./AC.
APARTMENT PARCEL #2 INFORMATION	
GROSS ACREAGE	39.55 AC.
UPLAND ACREAGE	16.03 AC.
UNIT COUNT	204 D.U.
UPLAND DENSITY	12.73 D.U./AC.

NOTES:
1) PLAN IS CONCEPTUAL AND IS SUBJECT TO CHANGE UPON REVIEW OF VARIOUS GOVERNMENTAL AGENCIES.
2) DRAINAGE AND EASEMENTS HAVE NOT BEEN DESIGNED.
3) WETLAND PERMITS WILL BE REQUIRED FOR JURISDICTIONAL WETLAND IMPACTS SHOWN ON PLAN.
4) SURVEY INFORMATION IS FROM OTHERS AND HAS NOT BEEN FIELD VERIFIED BY THOMAS & HUTTON.

DISCLAIMER

THIS PLAN AND ALL INFORMATION CONTAINED HEREIN ARE THE PROPERTY OF THOMAS & HUTTON ENGINEERING CO. AND ARE NOT TO BE REPRODUCED, COPIED, OR TRANSMITTED IN ANY FORM OR BY ANY MEANS, ELECTRONIC OR MECHANICAL, INCLUDING PHOTOCOPYING, RECORDING, OR BY ANY INFORMATION STORAGE AND RETRIEVAL SYSTEM, WITHOUT WRITTEN PERMISSION FROM THOMAS & HUTTON ENGINEERING CO. ANY UNAUTHORIZED USE OF THIS PLAN OR INFORMATION CONTAINED HEREIN IS STRICTLY PROHIBITED.

GRAPHIC SCALE



REVISED
5:09 pm, Apr 19, 2006

FOR COMMENT